

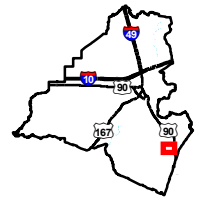
Exhibit P . AC Commercial Site Natural Gas Infrastructure Map



AC Commercial Site Natural Gas Infrastructure Map




AC Commercial Site
Lafayette Parish, LA

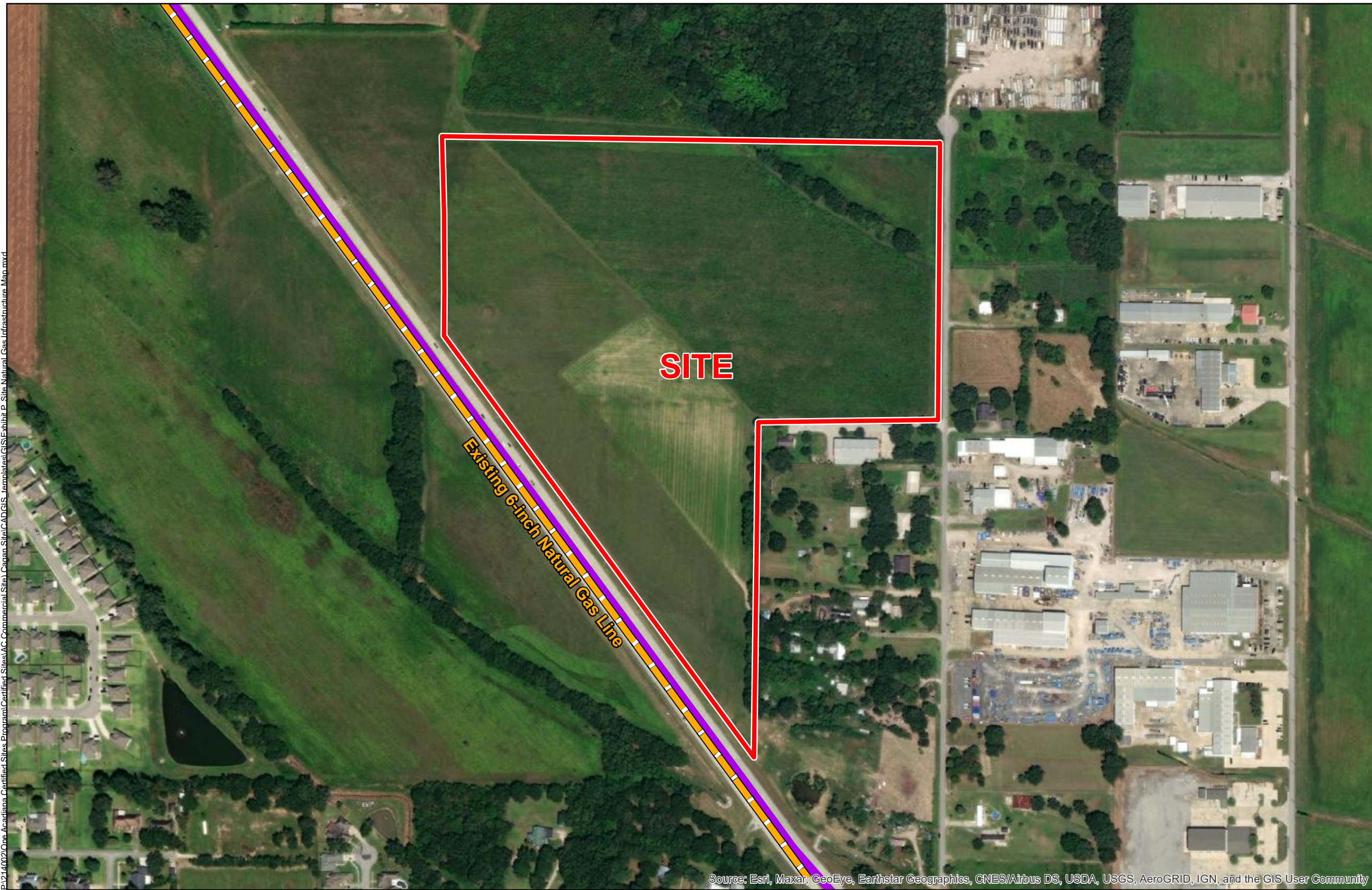
One Acadiana



Lafayette Parish

LEGEND

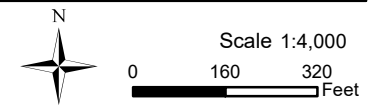
-  CenterPoint 6-inch Natural Gas Distribution Line
-  Site Boundary (44.94 Ac.±)
- Major Roads**
-  4-Lane State Highway



P:\214002\One Acadiana Certified Sites\Program\Certified Sites\AC Commercial Site\CAD\GIS_templates\GIS\ESR\Exhibit P_Site Natural Gas Infrastructure_Map.mxd

Source: Esri, Maxar, GeoEye, Earthstar Geographics, CNES/Airbus DS, USDA, USGS, AeroGRID, IGN, and the GIS User Community

- General Notes:
1. No attempt has been made by CSRS, Inc. to verify site boundary, title, actual legal ownership, deed restrictions, servitudes, easements, or other burdens on the property, other than that furnished by the client or his representative.
 2. Transportation data from 2013 TIGER datasets via U.S. Census Bureau at <ftp://ftp2.census.gov/geo/tiger/TIGER2013>.
 3. Utility information from visual inspection and/or the individual utility operators. Exact field location has not been determined by survey. The lines shown are an approximate representation only and may have been offset for depiction purposes.
 4. 2015 aerial imagery from USDA-APFO National Agricultural Inventory Project (NAIP) and may not reflect current ground conditions.



Date:	7/6/2021
Project Number:	214002
Drawn By:	SEW
Checked By:	EEB

