

Office/Warehouse Space for Lease in Luling

6 Dufresne Loop, Luling, LA 70070

Listing ID: 30817487
 Status: Active
 Property Type: Industrial For Lease
 Industrial Type: Flex Space, Free-Standing
 Contiguous Space: 8,100 SF
 Total Available: 8,100 SF
 Lease Rate: \$5,000 (Monthly)
 Unit Price: \$7.41 PSF (Annual)
 Base Monthly Rent: \$5,000
 Lease Type: Gross Lease



Overview/Comments

Office/warehouse property for lease in Luling. Part of a larger total property, a portion of which ("Building A") has already been leased. 23 year old well maintained ground level metal frame, siding and roof building with 20' eave height. There is a truck well and ground level truck loading with adequate parking. Small office area with good quality finishes and warehouse area has good quality lighting and insulated ceilings.

More Information Online

<https://www.lacdb.com//listing/30817487>

QR Code

Scan this image with your mobile device:



General Information

Tax ID/APN: 1502DBP0006A
 Gross Building Area: 8,100 SF

Building/Unit Size (RSF): 8,100 SF
 Usable Size (USF): 8,100 SF

Industrial Type Flex Space, Free-Standing, Industrial-Business Park, Manufacturing, Light Industrial, Research & Development, Warehouse/Distribution, Other

Available Space

Suite/Unit Number: B
 Space Available: 8,100 SF
 Minimum Divisible: 8,100 SF
 Maximum Contiguous: 8,100 SF
 Space Type: Relet

Date Available: 09/01/2022
 Lease Term (Months): 36 Months
 Lease Rate: \$5,000 (Monthly)
 Lease Type: Gross Lease
 Parking Spaces: 0

Building Related

Passenger Elevators: 0
 Freight Elevators: 0

Location

Address: 6 Dufresne Loop, Luling, LA 70070
 County: Saint Charles

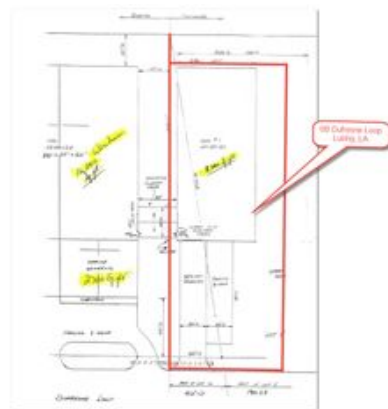
MSA: New Orleans-Metairie
 Submarket: St Charles Parish



Property Images



6B Dufresne Loop-Luling-LA- 2nd Site & Building Sketch



6B Dufresne Loop-Luling-LA-Site & Building Sketch



6B Dufresne Loop-Luling-LA-Aerial view



IMG_2706



IMG_2708



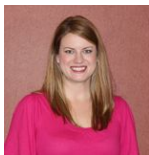
IMG_2709

Location Map-#6 Dufresnes Loop



IMG_2705

Property Contacts



Lauren T Marmande

Cypress Property Management, LLC
504-908-7158 [M]
985-653-7368 [O]
lauren@cypressmanages.com



Henry W Tatje, III

Cypress Property Management, LLC
985-653-7368 [O]
hank@cypressmanages.com