

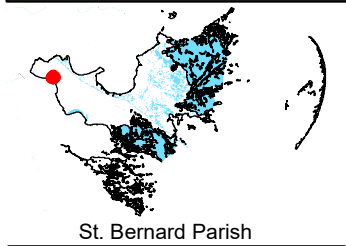
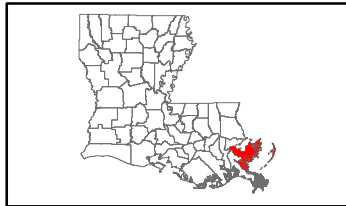
# Exhibit M. Sinclair Site Electrical Transmission Infrastructure Map



# Sinclair Electrical Transmission Infrastructure Map

Existing Electric Transmission  
Sinclair Site  
St. Bernard Parish, LA

St. Bernard EDF



St. Bernard Parish

## LEGEND

Sinclair Site Boundary (285.64 Ac. ±)

**Electric Transmission**  
 230 kV  
 115 kV

Substation

**Existing Roadway**  
 4-Lane State Highway  
 Urban State Highway

Rural State Highway  
 Local Roads

Railroad  
 Stream

Waterbody



Date:	1/26/2017
Project Number:	214094
Drawn By:	TMK
Checked By:	JAY

**CSRS**  
IMAGINE SHAPE DELIVER  
6767 Perkins Road Suite 200 Baton Rouge, LA 70808  
Telephone: 225 769-0546 Fax: 225 767-0060  
www.csrsonline.com

P:\214094\GNO Certified Sites Program\Sinclair Site\CAD\GIS templates\GIS\Exhibit L - Sinclair Site Electrical Transmission Infrastructure Map.mxd

## General Notes:

1. No attempt has been made by CSRS, Inc. to verify site boundary, title, actual legal ownership, deed restrictions, servitudes, easements, or other burdens on the property, other than that furnished by the client or his representative.
2. Transportation data from 2013 TIGER datasets via U.S. Census Bureau at <ftp://ftp2.census.gov/geo/tiger/TIGER2013>.
3. Utility information from visual inspection and/or the individual utility operators. Exact field location has not been determined by survey. The lines shown are an approximate representation only and may have been offset for depiction purposes.
4. 2015 aerial imagery from USDA-APFO National Agricultural Inventory Project (NAIP) and may not reflect current ground conditions.



Scale 1:22,000  
0 1,100 2,200 Feet