

Exhibit I - Electrical Service Map &
Letter

October 22, 2015

Mr. Larry Henson
Louisiana Economic Development (LED)
1051 North Third St.
Baton Rouge, LA 70802-5239

Mr. David Conner
Southwest Economic Development Alliance (SWLA)
P.O. Box 3110
Lake Charles, LA 70602

Parks & Planning

Transportation

RE: H.C. Drew Property (+/- 183 Acres)
Electrical Service

Site Development

Dear Gentlemen:

Utility Systems

SJB Group, LLC (SJB) has been authorized by Louisiana Economic Development (LED and Southwest Louisiana Economic Alliance (SWLA) to perform due diligence investigations to determine the existence of fatal flaws, if any, that would inhibit the development of H.C. Drew Property (1,000 Acres) – Development Area (+/- 183 Acres), located west of the City of Sulphur, in Calcasieu Parish, Louisiana.

Land Surveying

Construction Services

The local provider of electrical power for this site is Entergy Gulf States Louisiana, LLC, which is located at 303 N. Ryan St., Lake Charles, LA 70601. The point of contact with Entergy that provided the requested information was Jamie Chapman, Region Engineering Supervisor, who can be reached at (337) 431-6282. The nearest distribution line is along the northern boundary of the site and is reported as a 34.5 kV distribution line. The distance to the nearest transmission line is 3.1 miles and is reported as a 138 kV transmission line. Reliable 3-phase service is available at the site; however, dual feed is not available at this time. The Peak load capacity available at the site is 9.85 MW. The distance to the nearest substation to serve this site is Toomey, 11.4 miles. The distance to the next closest substation, which does not serve this site is Burton, 7.1 miles. In addition, there is a 230 kV transmission line located 6.8 miles to the east of the site.

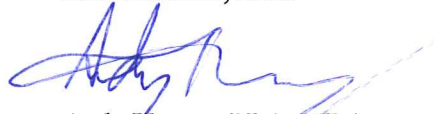
Environmental Services

Real Estate Services

Please feel free to contact me at (225) 769-3400, at any time, should you have any questions or need further information.

Sincerely,

SJB GROUP, LLC



Andy Hursey, PLA, MBA
Landscape Architect

Enclosure: Electrical Service Map

P. O. Box 1751

Baton Rouge, Louisiana

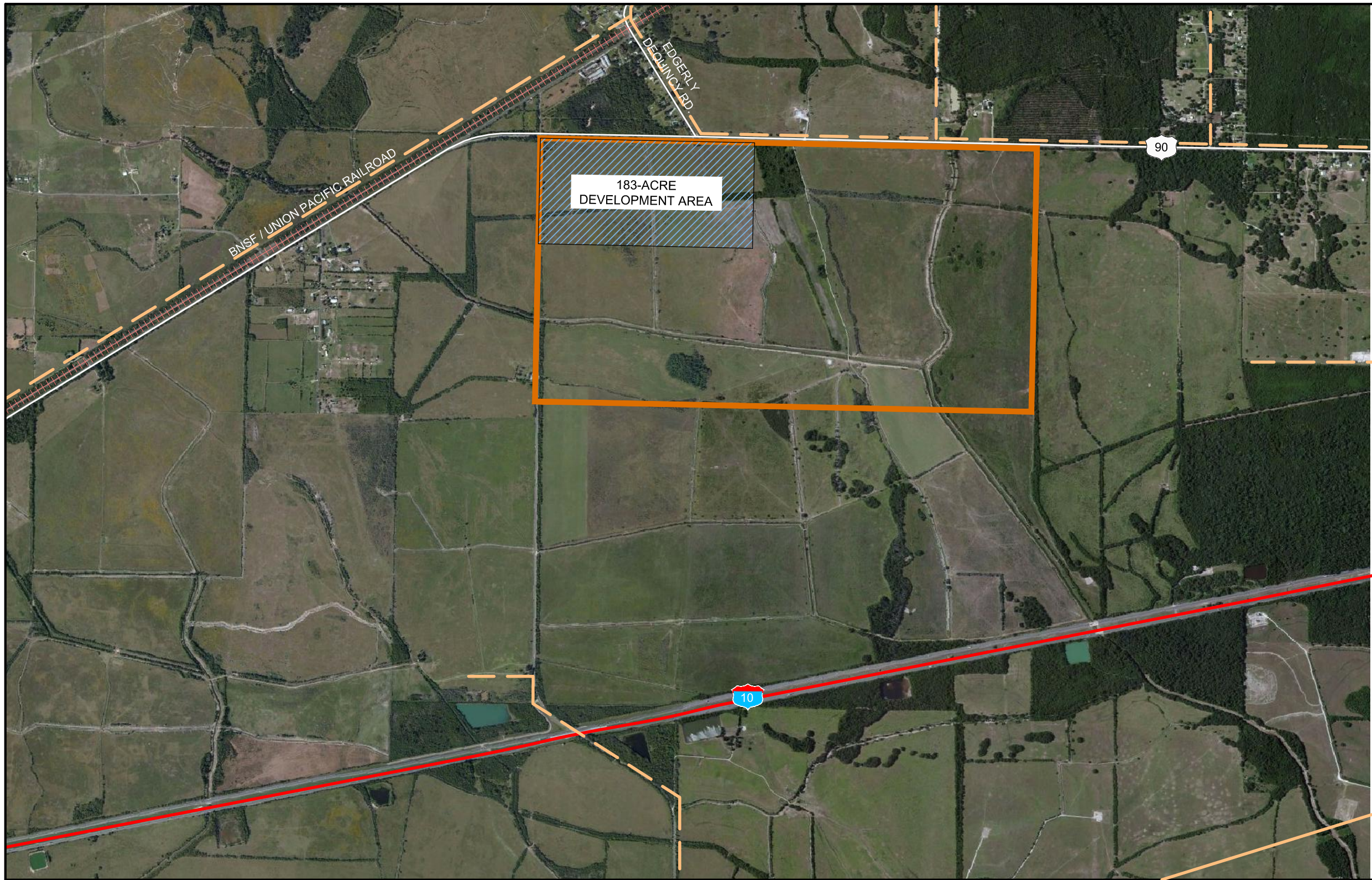
70821-1751

(225) 769-3400

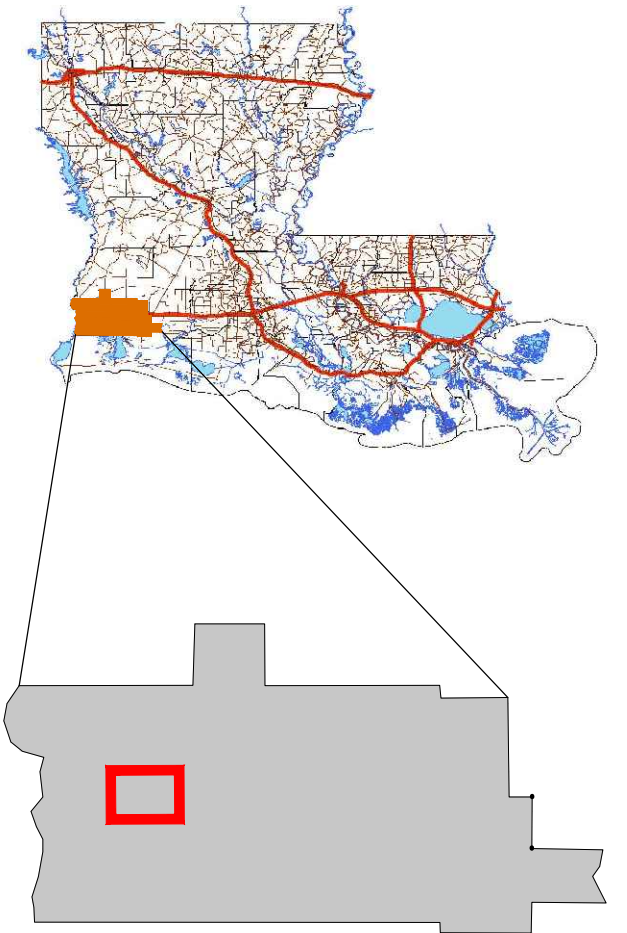
Fax (225) 769-3596

www.sjbgroup.com





Exhibit I - Electrical Service Map



 Calcasieu Parish



Available Site Data

-  H.C. Drew (1,000 Acres)
-  Development Area (183 Acres)
-  34.5 kV Distribution Line
-  138 kV Transmission Line

Source:
- Aerial Photo: 2014 Google Earth
- Site Boundaries are Approximate
- 12/10/2014



(IN FEET)
1 INCH = 2000ft.