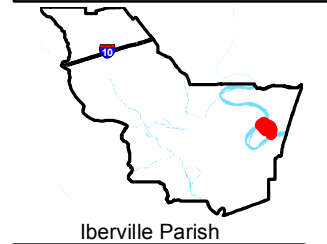
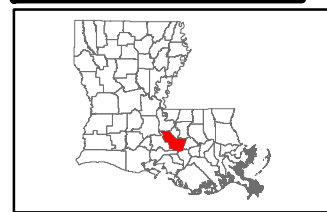


Exhibit Z. Carville Riverfront Development All Utilities Infrastructure Site Map

Project:
Site Exhibit for
Carville Riverfront Development
Iberville Parish, LA

Client:
BRAC



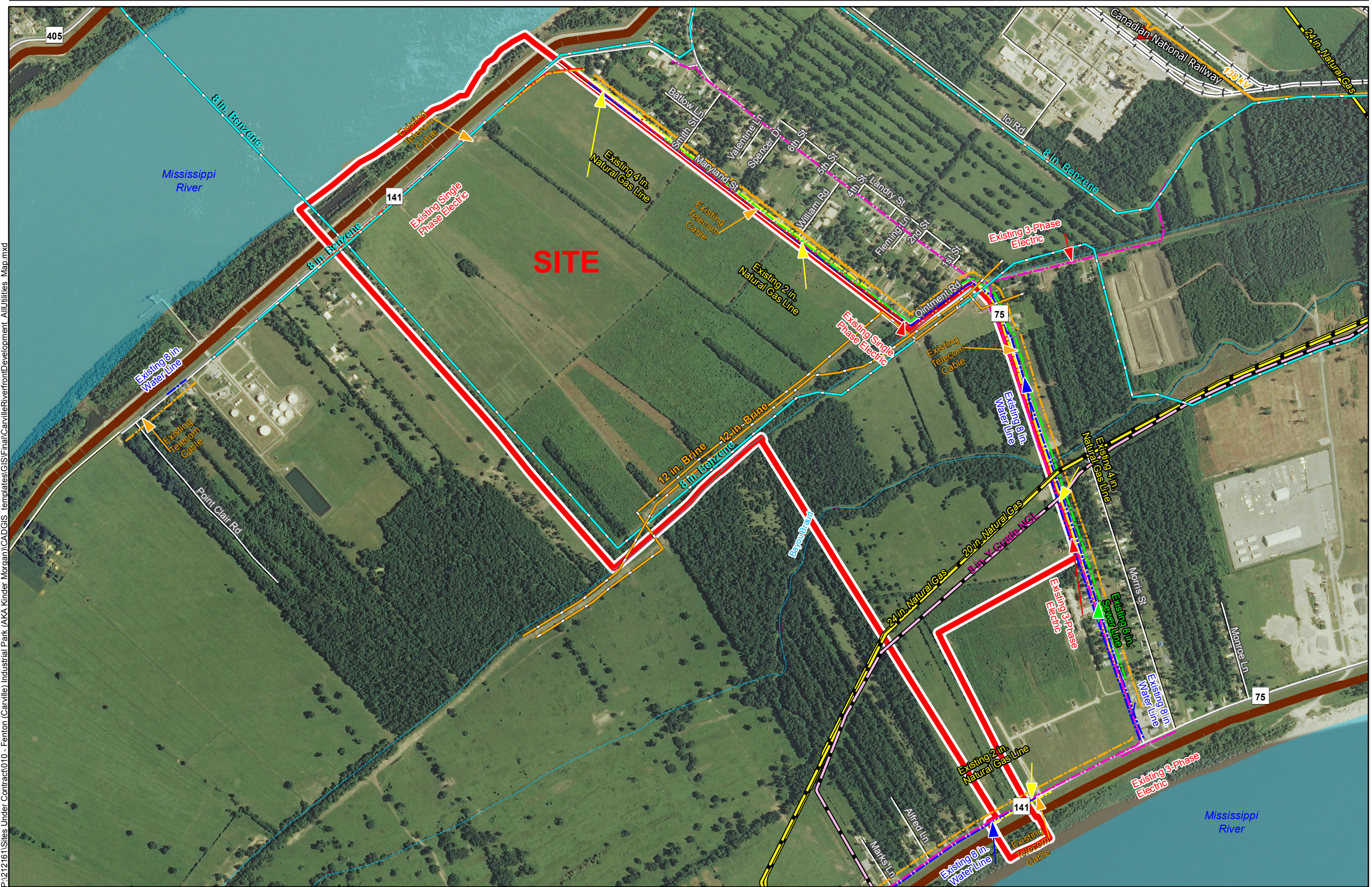
Iberville Parish

- Legend**
- EXISTING UTILITIES**
- Site Boundary
 - Existing Transmission Utilities
 - 138 kV
 - Substation
 - Active Transmission Pipelines
 - Benzene
 - Brine
 - Natural Gas
 - Y-Grade NGL
 - Existing Distribution Utilities
 - Water
 - Natural Gas
 - Sewer
 - Telecomm (T1, T3, Fiber Optics, Digital Switching)
 - Electric Not 3-Phase
 - Electric 3-Phase
 - Existing Roadway
 - Rural State Highway
 - Local Roads
 - Railroad
 - Levee
 - Stream or River
 - Waterbody

Baton Rouge Area Chamber.

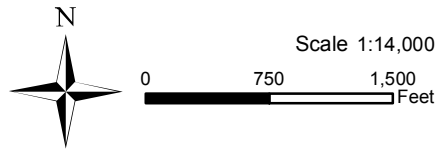
Date: 7/3/2014
Project Number: 212161.010
Drawn By: MMS
Checked By: TMG

CSRS
IMAGINE SHAPE DELIVER
6767 Perkins Road Suite 200 Baton Rouge, LA 70808
Telephone: 225 769-0546 Fax: 225 767-0060
www.csrsonline.com



General Notes:

1. No attempt has been made by CSRS, Inc. to verify site boundary, title, actual legal ownership, deed restrictions, servitudes, easements, or other burdens on the property, other than that furnished by the client or his representative.
2. Transportation data from 2013 TIGER datasets via U.S. Census Bureau at ftp2.census.gov/geo/tiger/TIGER2013.
3. Utility information from visual inspection and/or the individual utility operators. Exact field location has not been determined by survey. The lines shown are an approximate representation only and may have been offset for depiction purposes.
4. 2013 aerial imagery from USDA-APFO National Agricultural Inventory Project (NAIP) and may not reflect current ground conditions.



P:\212161\Sites Under Contract\010 - Fenton (Carville) Industrial Park (AKA Kinder Morgan)\CAD\GIS templates\GIS\FinalCarvilleRiverfrontDevelopment AllUtilities Map.mxd