

## **Exhibit V**

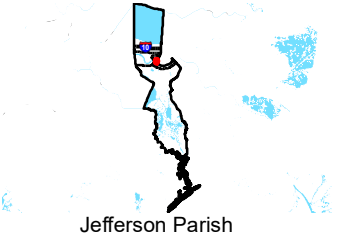
# **Bridgeview Park Site Topographic Contour Map**



# Bridgeview Park Site Topographic Contour Map

Bridgeview Park Site  
Jefferson Parish, LA

LED



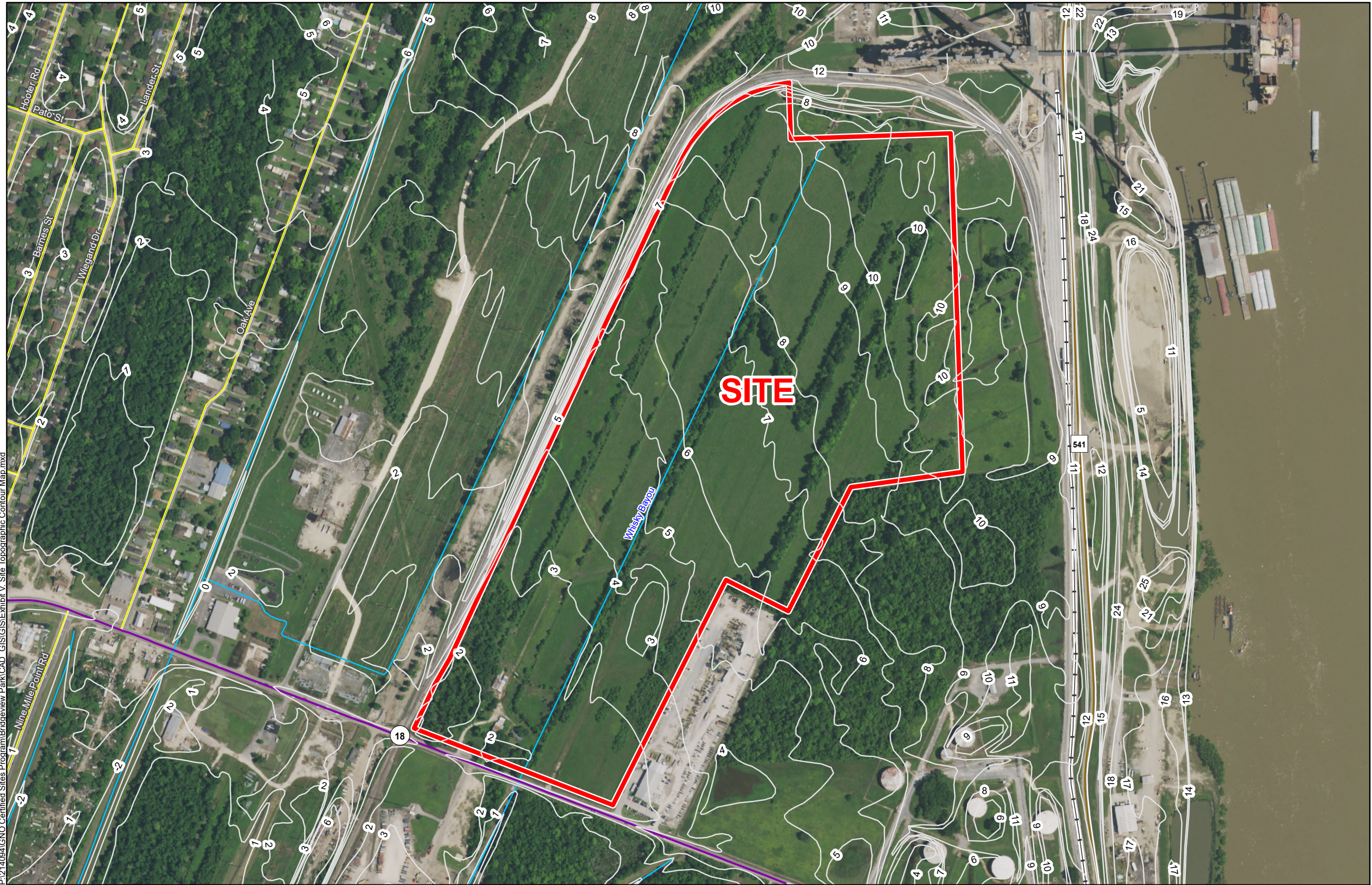
LEGEND

- Site Boundary (114.38 Ac. +/-)
- Ground Elevation Contours
- Existing Roadway
  - Urban State Highway
  - Rural State Highway
  - Local Roads
- Railroad
- Stream

LED LOUISIANA  
ECONOMIC  
DEVELOPMENT

Date: 7/10/2017  
Project Number: 214094  
Drawn By: AMB  
Checked By: JAY

CSRS  
IMAGINE SHAPE DELIVER  
6767 Perkins Road Suite 200 Baton Rouge, LA 70808  
Telephone: 225 769-0546 Fax: 225 767-0060  
www.csrsonline.com



General Notes:

1. No attempt has been made by CSRS, Inc. to verify site boundary, title, actual legal ownership, deed restrictions, servitudes, easements, or other burdens on the property, other than that furnished by the client or his representative.
2. Transportation data from 2013 TIGER datasets via U.S. Census Bureau at [ftp2.census.gov/geo/tiger/TIGER2013](http://ftp2.census.gov/geo/tiger/TIGER2013).
3. 2015 aerial imagery from USDA-APFO National Agricultural Inventory Project (NAIP) and may not reflect current ground conditions.
4. Preliminary FIRM Flood data provided by FEMA Flood Map Service Center ([msc.fema.gov](http://msc.fema.gov)). Preliminary FIRM panel no. 22051C0195F revised 01/15/2016.



Scale 1:6,000  
0 320 640 Feet