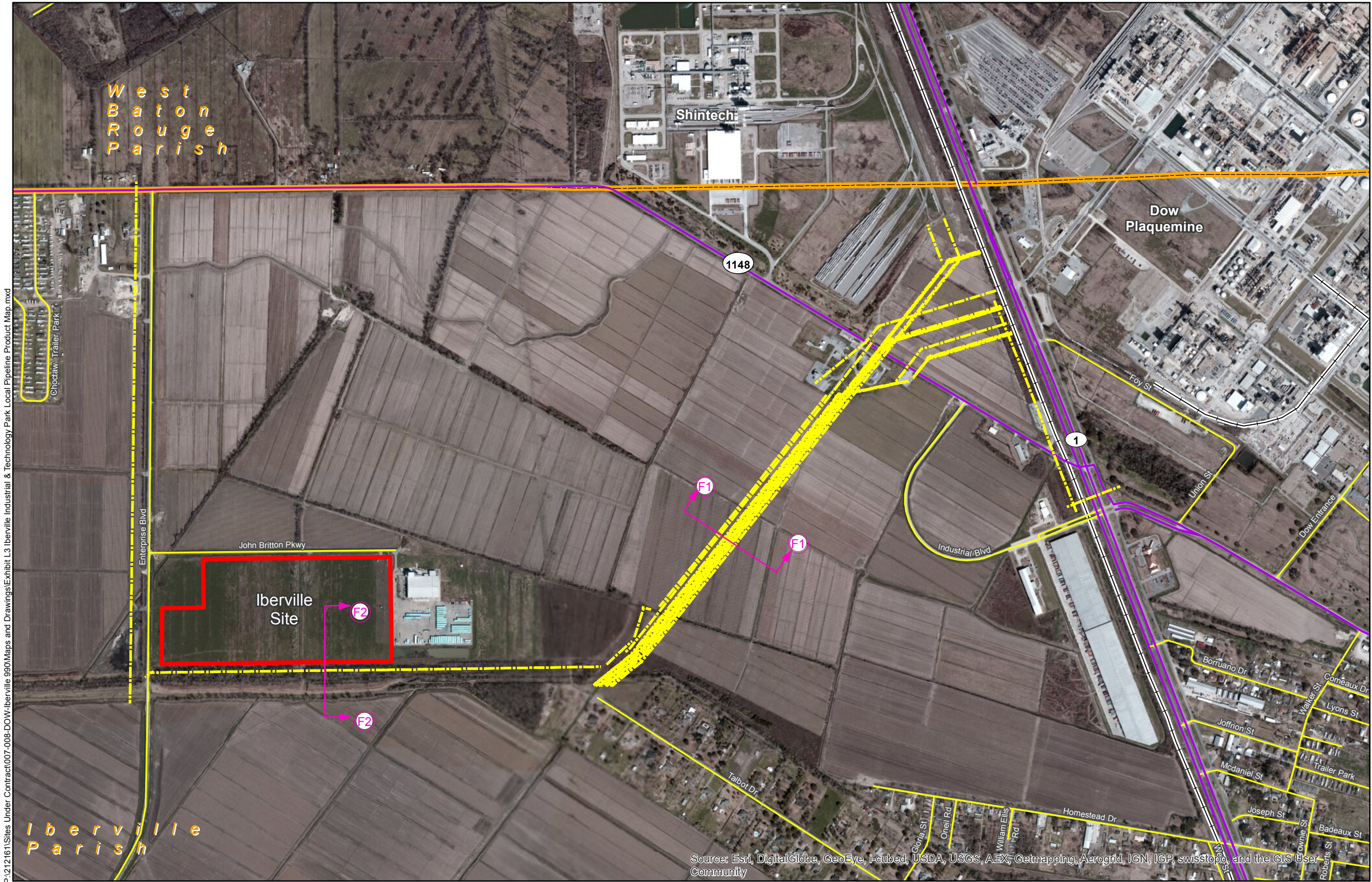
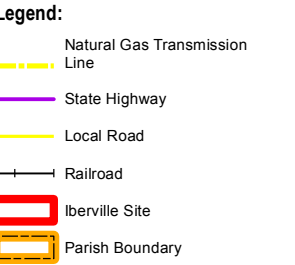
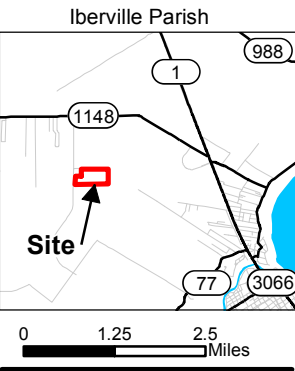
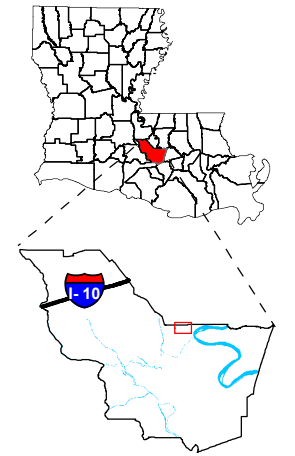


# Exhibit L. Iberville Industrial & Technology Park Local Product Pipeline Maps



Project:  
**Site Exhibit for  
Iberville Site  
Iberville Parish, LA**

Client:  
**BRAC**



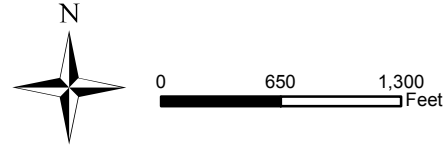
Source:  
GIS features acquired from public domain state and federal data sources (LDOTD, GNIS, LOSCO, US Census Bureau).

Date:	11/26/2013
Project Number:	212161.20.008
Drawn By:	MMS
Checked By:	TMG

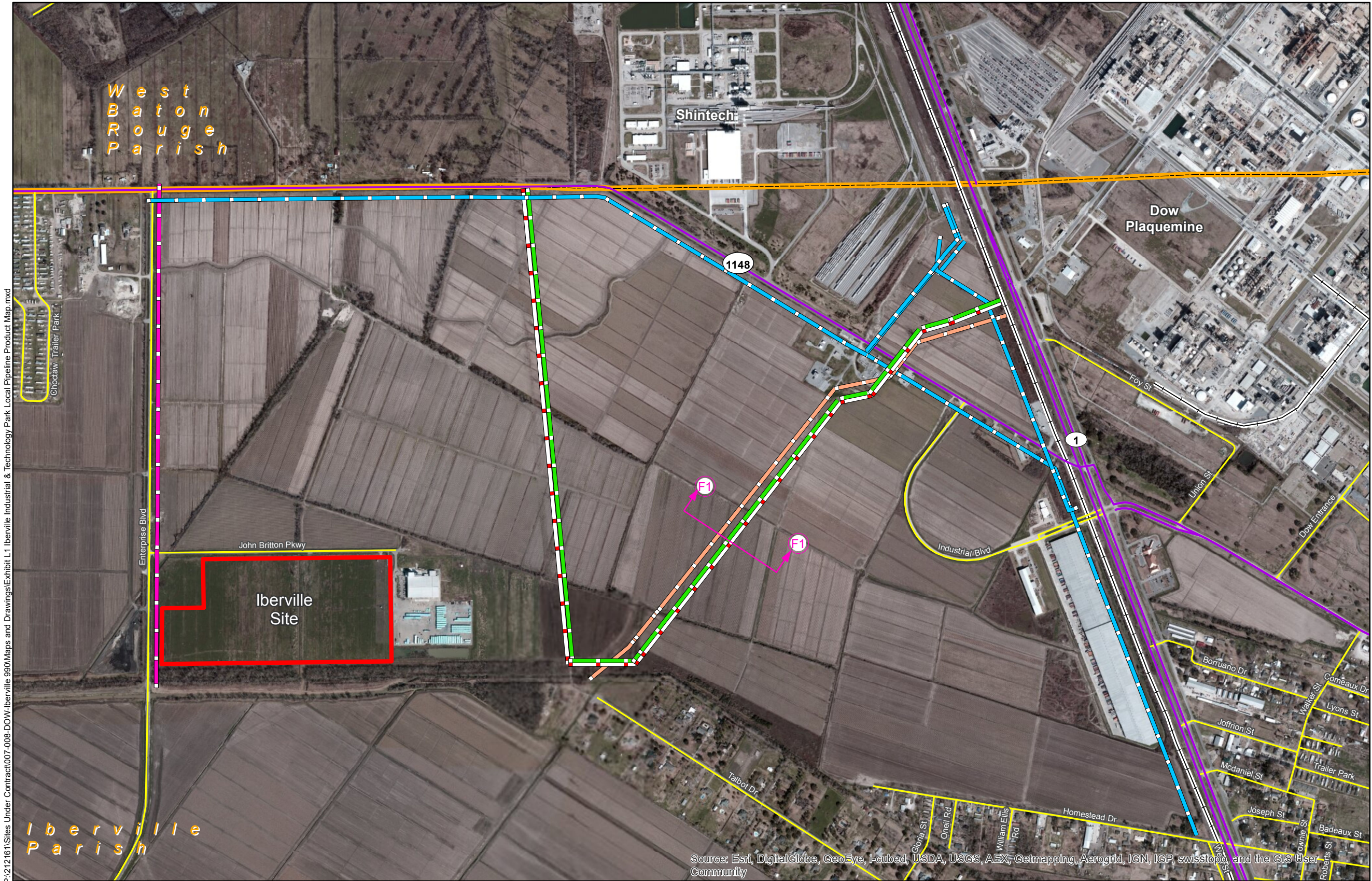


General Notes:

1. No attempt has been made by CSRS, Inc. to verify title, actual legal ownership, deed restrictions, servitudes, easements, or other burdens on the property, other than that furnished by the client or his representative.
2. Railroad and Highway data obtained from 2013 TIGER datasets via U.S. Census Bureau at <ftp://ftp2.census.gov/geo/tiger/TIGER2013>.
3. Pipeline information obtained from the National Pipeline Mapping System website (<http://www.npms.phmsa.dot.gov>), Louisiana One Call and the individual pipeline operators.
4. Exact field location has not been determined by survey. The lines shown are an approximate representation only and may have been offset for depiction purposes.
5. Product types in individual lines can vary the products represented here were current as of the publication of this exhibit, but may change depending on the demands and requirements of their systems.

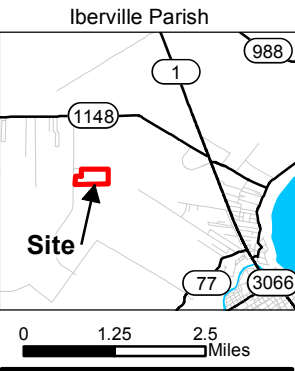
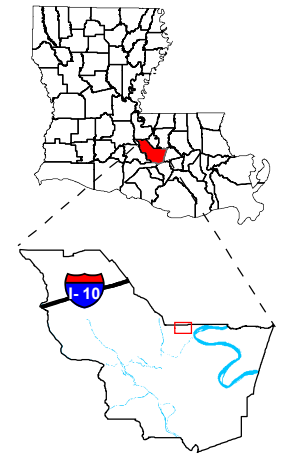


# Exhibit L. Iberville Industrial & Technology Park Local Product Pipeline Maps



Project:  
**Site Exhibit for  
Iberville Site  
Iberville Parish, LA**

Client:  
**BRAC**



- Legend:**
- Nustar Ammonia
  - Denbury CO2
  - Air Products Hydrogen
  - Air Liquide Nitrogen
  - Air Liquide Oxygen
  - State Highway
  - Local Road
  - Railroad
  - Iberville Site
  - Parish Boundary

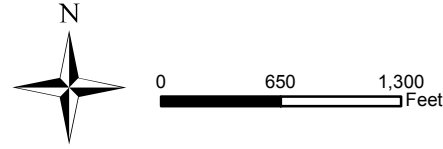


Source:  
GIS features acquired from public domain state and federal data sources (LDOTD, GNIS, LOSCO, US Census Bureau).

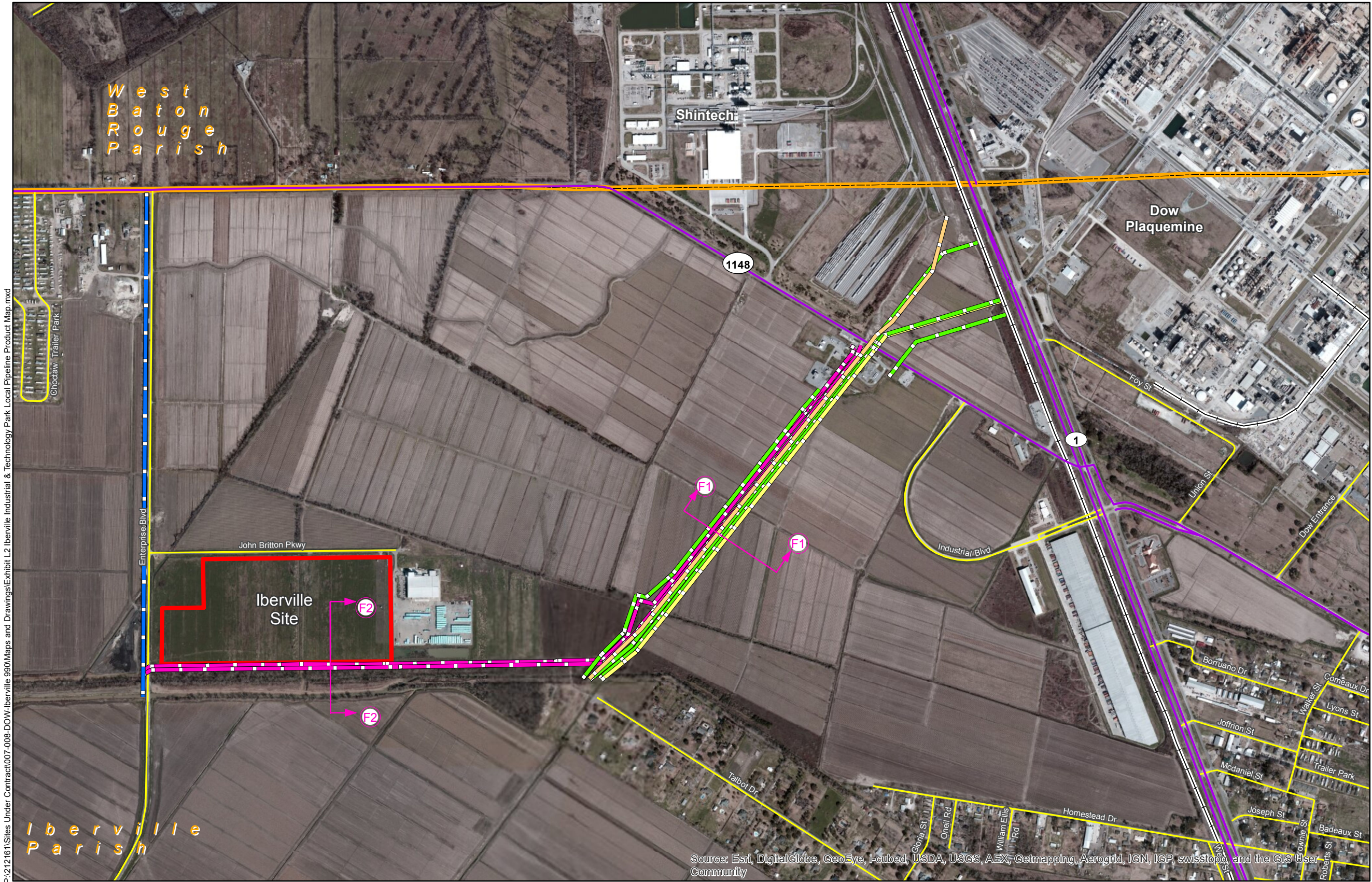
Date:	11/26/2013
Project Number:	212161.20.008
Drawn By:	MMS
Checked By:	TMG



- General Notes:
1. No attempt has been made by CSRS, Inc. to verify title, actual legal ownership, deed restrictions, servitudes, easements, or other burdens on the property, other than that furnished by the client or his representative.
  2. Railroad and Highway data obtained from 2013 TIGER datasets via U.S. Census Bureau at <ftp://ftp2.census.gov/geo/tiger/TIGER2013>.
  3. Pipeline information obtained from the National Pipeline Mapping System website (<http://www.npms.phmsa.dot.gov>), Louisiana One Call and the individual pipeline operators.
  4. Exact field location has not been determined by survey. The lines shown are an approximate representation only and may have been offset for depiction purposes.
  5. Product types in individual lines can vary the products represented here were current as of the publication of this exhibit, but may change depending on the demands and requirements of their systems.



# Exhibit L. Iberville Industrial & Technology Park Local Product Pipeline Maps

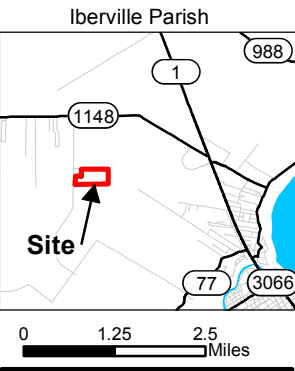
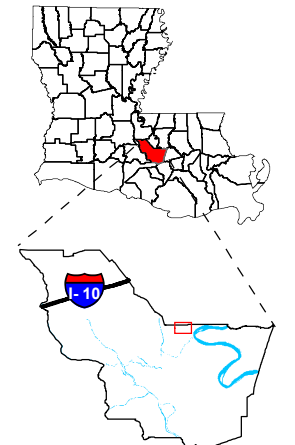


P:\212161\Sites Under Contract\007-008-DOW-Iberville 990\Maps and Drawings\Exhibit L2 Iberville Industrial & Technology Park Local Pipeline Product Map.mxd

- General Notes:
1. No attempt has been made by CSRS, Inc. to verify title, actual legal ownership, deed restrictions, servitudes, easements, or other burdens on the property, other than that furnished by the client or his representative.
  2. Railroad and Highway data obtained from 2013 TIGER datasets via U.S. Census Bureau at [ftp2.census.gov/geo/tiger/TIGER2013](http://ftp2.census.gov/geo/tiger/TIGER2013).
  3. Pipeline information obtained from the National Pipeline Mapping System website (<http://www.npms.phmsa.dot.gov>), Louisiana One Call and the individual pipeline operators.
  4. Exact field location has not been determined by survey. The lines shown are an approximate representation only and may have been offset for depiction purposes.
  5. Product types in individual lines can vary the products represented here were current as of the publication of this exhibit, but may change depending on the demands and requirements of their systems.

Project:  
Site Exhibit for  
Iberville Site  
Iberville Parish, LA

Client:  
BRAC



- Legend:
- Pipeline Technology Benzene
  - Dow & Boardwalk Brine
  - Dow & Exxon Ethylene
  - Dow & Pipeline Technology Propylene
  - Boardwalk Vinyl Chloride Monomer
  - State Highway
  - Local Road
  - Railroad
  - Iberville Site
  - Parish Boundary

Baton Rouge Area Chamber.

Source:  
GIS features acquired from public domain state and federal data sources (LDOTD, GNIS, LOSCO, US Census Bureau).

Date: 11/26/2013  
Project Number: 212161.20.008  
Drawn By: MMS  
Checked By: TMG

CSRS  
IMAGINE SHAPE DELIVER  
6767 Perkins Road Suite 200 Baton Rouge, LA 70808  
Telephone: 225 769-0546 Fax: 225 767-0060  
[www.csrsonline.com](http://www.csrsonline.com)

Exhibit L. Iberville Industrial & Technology Park Local Product Pipeline Maps



6767 Perkins Road Suite 200 Baton Rouge, LA 70808  
Telephone: 225 767-0546 Fax: 225 767-0060  
www.csronline.com

Project:

**BRAC**  
**Dow LAO-West Site**  
**Pipeline Cross-Section**  
**Iberville Parish, LA**

Client:

GENERAL NOTES:

- 1. PIPELINES DIMENSIONS AND PRODUCT INFORMATION OBTAINED FROM THE NATIONAL PIPELINE MANAGEMENT SERVICE ([HTTPS://WWW.NPMS.PHMSA.DOT.GO](https://www.npms.phmsa.dot.gov) AND LOUISIANA ONE CALL ([HTTP://WWW.LAONECALL.COM/](http://www.laonecall.com/))
- 2. PIPELINE LOCATIONS ARE APPROXIMATE, EXACT FIELD LOCATIONS HAVE NOT BEEN DETERMINED. THE CENTERLINE LOCATIONS ARE APPROXIMATE AND FOR REPRESENTATION PURPOSES ONLY.
- 3. PIPELINE OPERATING PRESSURES ARE APPROXIMATE AND CAN VARY DEPENDING ON SYSTEM DEMANDS AND CONDITIONS
- 4. DOW PIPELINE PRODUCT TYPES CAN VARY DEPENDING ON SYSTEM REQUIREMENTS AND DEMANDS FROM COMMODITY CUSTOMER. PRODUCTS REPRESENTED HERE WERE CURRENT AT THE TIME OF THE PRODUCTION OF THIS DRAWING

Revisions:

#	Date	Description

Key Plan:

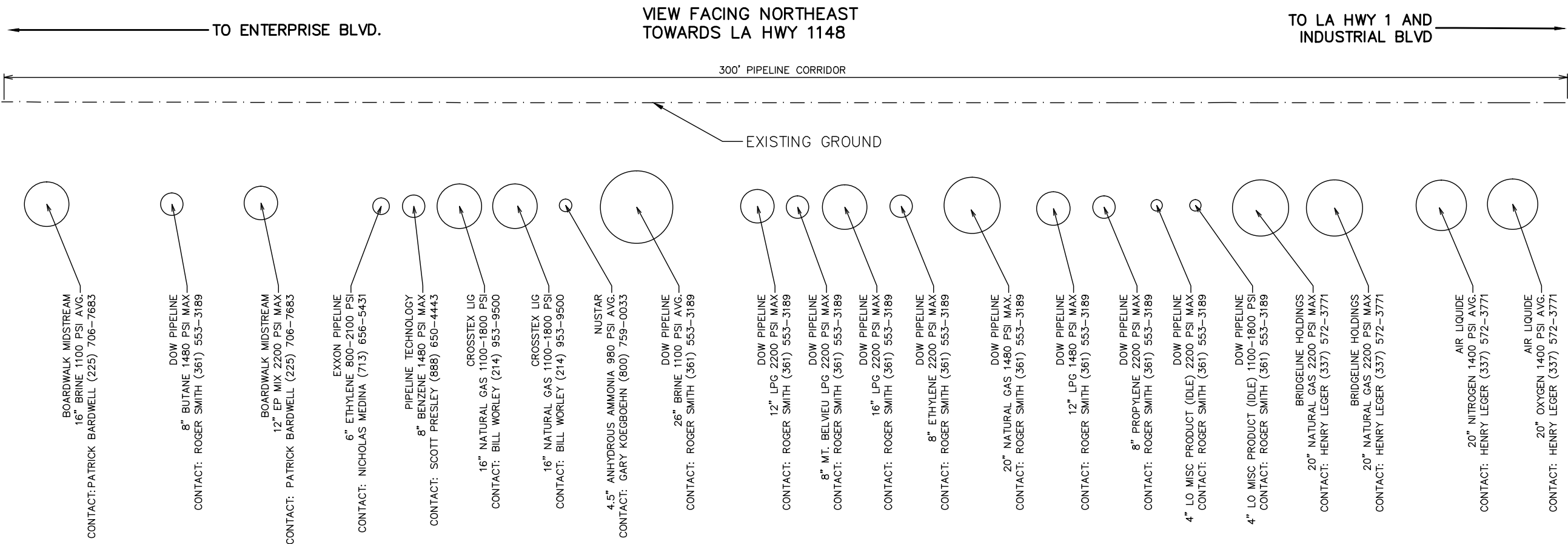


Sheet Title:

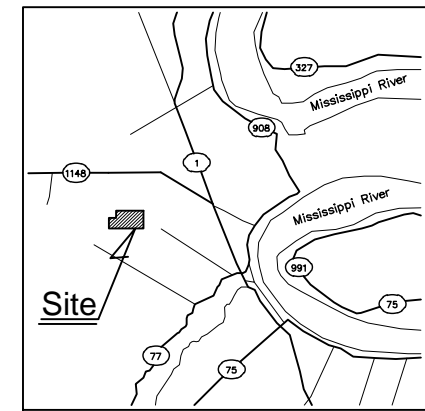
**Dow LAO-West Site**  
**Pipeline Commodities**

Date: November 2013  
Project Number: 212161  
Drawn By: JAY  
Checked By: TMG

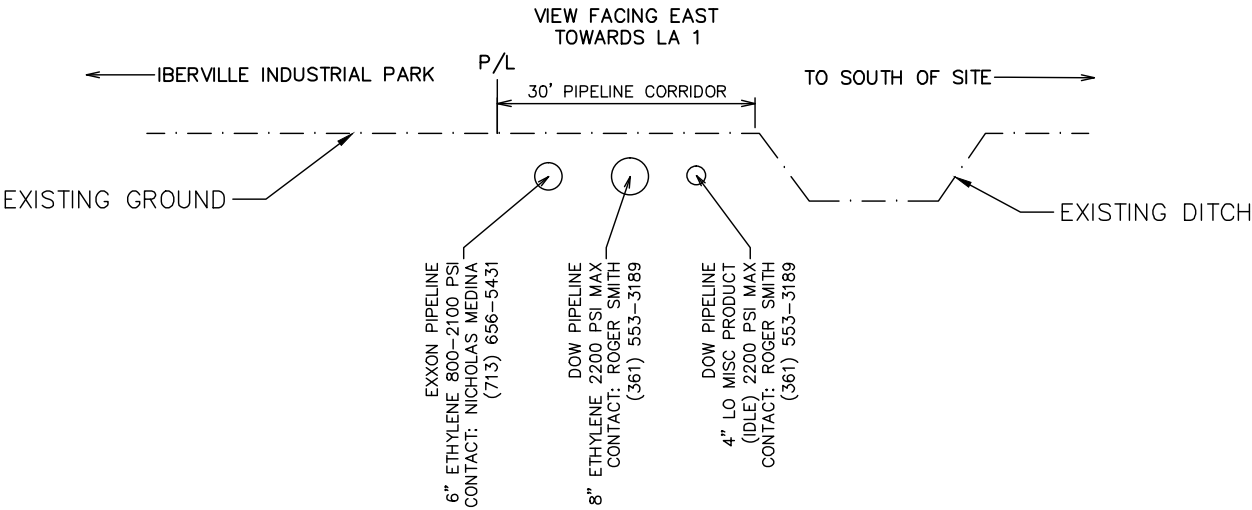
Sheet:



CROSS SECTION F1, VIEW FACING NORTHEAST  
DRAWING NOT TO SCALE, FOR REPRESENTATIONAL PURPOSES ONLY.



VICINITY MAP  
Scale: NTS



CROSS SECTION F2, VIEW FACING EAST  
DRAWING NOT TO SCALE, FOR REPRESENTATIONAL PURPOSES ONLY.

# Exhibit L. Iberville Industrial & Technology Park

## Local Product Pipeline Maps

COMMODITY	DIMENSION	OPERATING PRESSURE	OPERATOR NAME	POINT OF CONTACT TITLE	CONTACT ADDRESS	PHONE / FAX / EMAIL			
NITROGEN	18"	1400 psi avg.	AIR LIQUIDE AMERICA	L J Morvant Location Coordinator		Phone: (225) 718-7380			
OXYGEN	18"	1400 psi avg.				Fax:			
HYDROGEN	18"	1400 psi avg.	AIR PRODUCTS	Leticia Prevost Pipeline Compliance Manager	10202 Strang Road La Porte TX 77571	Email: None			
	18"	1400 psi avg.				Phone: (281) 478-7579			
BRINE	16"	1100 psi avg.	BOARDWALK LOUISIANA MIDSTREAM	Patrick Bardwell Integrity Supervisor	4460 Bluebonnet Blvd,Suite B Baton Rouge LA 70809	Fax:			
EP MIX	12"	2200 psi max				Email: prevoslb@airproducts.com			
ETHYLENE	6"	1480 psi max	BOARDWALK LOUISIANA MIDSTREAM (PL OLEFINS)			Phone: (225) 706-7683			
VCM	8"	1480 psi max				Fax: (225) 706-7050			
NATURAL GAS	20"	2200 psi max	BRIDGELINE HOLDINGS (CHEVRON PIPELINE)	Henry Leger Pipeline Safety Specialist	200 Galbert Rd Lafayette LA 70506	Email: pbardwell@petrologistics.com			
	20"	2200 psi max				Phone: (337) 572-3771			
	26"	2200 psi max				Fax:			
POTABLE WATER	14"		CITY OF PLAQUEMINE	Frank Mott Director of Utilities	58190 W. W. Harleaux St. Plaquemine, LA 70764	Email: henryleger@chevron.com			
NATURAL GAS	16"	1100-1800 psi	CROSSTEX LIG LLC	Bill Worley DOT Pipeline Compliance Manager	2501 Cedar Springs Rd,Suite 100 Dallas TX 75201	Phone: (225) 687-2461			
	16"	1100-1800 psi				Fax: (225)-687-1037			
CARBON DIOXIDE	24"	1500-2200 psi	DENBURY ONSHORE LLC	Ernesto Alegria Manager of Investor and Corporate Relations	5320 Legacy Dr. Plano TX 75024	Email:			
LO MISCL	4"	2200 psi max	DOW CHEMICAL (MULTIPLE P/L)	Roger Smith Public Awareness/Security Specialist	PO Box 186 Seadrift TX 77994	Phone: (972) 673-2000			
NATURAL GAS	8"	1480 psi max	DOW HYDROCARBONS & RESOURCES			Fax:			
NATURAL GAS	20"	1480 psi max	DOW INTRASTATE GAS CO			Email: Ernesto.alegria@denbury.com			
BRINE	26"	1100 psi avg.	DOW PIPELINE			Phone: (361) 553-3189			
BUTANE	8"	1480 psi max					Fax: (361) 553-3122		
ETHYLENE	8"	2200 psi max						Email: smithrp@dow.com	
LIQUID PETROLEUM GAS	12"	2200 psi max							
	12"	2200 psi max							
	16"	2200 psi max							
NATURAL GAS	20"	N/A							DOW PIPELINE (MT BELVIEU)
PROPYLENE	8"	2200 psi max							
MULTIPLE HVL'S	8"	2200 psi max							
LO MISCL	4"	2200 psi max							
ETHYLENE	6"	800-2100 psi	EXXONMOBIL PIPELINE	Nicolas Medina Public and Government Affairs Manager	800 Bell St,Room 741e Houston TX 77002				Phone: (713) 656-5431
NATURAL GAS	2"	50 psi	IBERVILLE PARISH UTILITY DEPT.	Brian Berthelot Director	59805 Bayou Rd. Plaquemine, LA 70765				Fax:
WATER	12"								Email: nicolas.medina@exxonmobil.com
ANHYDROUS AMMONIA	4.5"	980 psi	NUSTAR PIPELINE OPERATING PART	Gary Koegeboehn VP GM Operations	7340 West 21st N,Ste. 200 Wichita KS 67205	Phone: (225) 687-5152			
BENZINE	8"	1480 psi max	PIPELINE TECHNOLOGY LLC	Scott Presley	1048 Florida Blvd. Baton Rouge LA 70802	Fax: (225) 687-9696			
NATURAL GAS	36"	1100-1800 psi	TEXAS EASTERN TRANS (SPECTRUM ENERGY)	Dwayne Teschendorf Principal Engineer	5400 Westheimer Ct, Houston TX 77056	Email: bberthelot@ibervilleparish.com			
						Phone: (800) 759-0033			
						Fax:			
						Email: Gary.Koegeboehn@nustarenergy.com			
						Phone: (888) 650-4443			
						Fax: (225) 336-1849			
						Email: scott.presley@pipelinetechnology.biz			
						Phone: (713) 627-5573			
						Fax:			
						Email: none			