

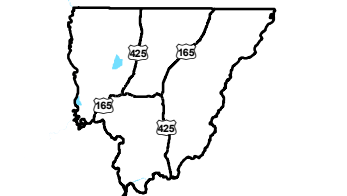
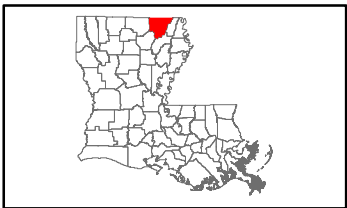


Exhibit N. Bastrop IP Mill Site Electrical Distribution Infrastructure Map

Bastrop IP Mill Site Electrical Distribution Infrastructure Map

Bastrop IP Mill Site
Morehouse Parish, LA

NELEA



Morehouse Parish

LEGEND

- Site Boundary
- Entergy Single Phase Electrical Line
- Entergy Two Phase Electrical Line
- Entergy Three Phase Electrical Line
- Existing Roadway
 - US Highway
 - Rural State Highway
 - Local Roads
- Railroad



ECONOMIC ALLIANCE

NELEA

Date: 8/12/2019

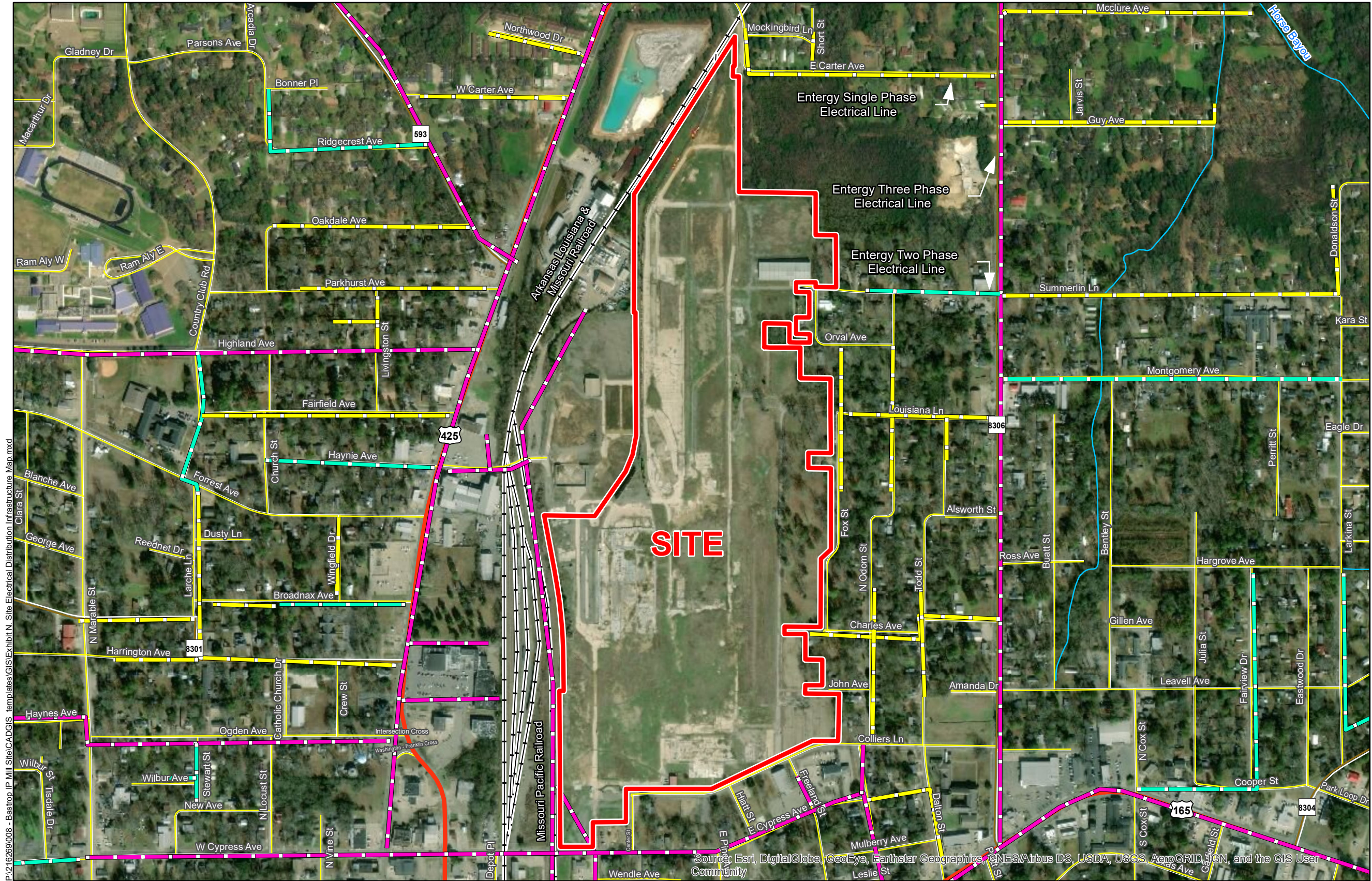
Project Number: 216269

Drawn By: BNF

Checked By: DWC

CSRS

P:\216269\008 - Bastrop IP Mill Site\CAD\GIS templates\GIS\Exhibit N - Site Electrical Distribution Infrastructure Map.mxd



General Notes:

1. No attempt has been made by CSRS, Inc. to verify site boundary, title, actual legal ownership, deed restrictions, servitudes, easements, or other burdens on the property, other than that furnished by the client or his representative.
2. Transportation data from 2013 TIGER datasets via U.S. Census Bureau at <ftp://ftp2.census.gov/geo/tiger/TIGER2013>.
3. Utility information from visual inspection and/or the individual utility operators. Exact field location has not been determined by survey. The lines shown are an approximate representation only and may have been offset for depiction purposes.
4. 2015 aerial imagery from USDA-APFO National Agricultural Inventory Project (NAIP) and may not reflect current ground conditions.



Scale 1:7,000
0 360 720 Feet