

May 4, 2015

Mr. Larry Henson
Louisiana Economic Development (LED)
1051 North Third St.
Baton Rouge, LA 70802-5239

Mr. David Conner
Southwest Economic Development Alliance (SWLA)
P.O. Box 3110
Lake Charles, LA 70602

RE: B11-Chennault Sites 2 & 2A (185 Acres)
Potable Water Supply


Dear Gentlemen:

SJB Group, LLC (SJB) has been authorized by Louisiana Economic Development (LED and Southwest Louisiana Economic Alliance (SWLA) to perform due diligence investigations to determine the existence of fatal flaws, if any, that would inhibit the development of Chennault Sites 2 & 2A (+/- 185 acres), located southeast of the City of Lake Charles in Calcasieu Parish, Louisiana.

The attached exhibit illustrates the approximate location of a water main that is currently operated and maintained by the City of Lake Charles Water System (Louisiana Public Water System ID: 1019029). City of Lake Charles Water System has indicated that up to 4 MGD of potable water can be provided to the site, with a static pressure of approximately 60 psi. The estimated cost of connection would be \$4,000, based on installing 100 feet of water piping between the site boundary and the water main.

Please feel free to contact me at (225) 769-3400, at any time, should you have any questions or need further information.

Sincerely,
SJB GROUP, LLC


Michael L. Thompson, P.E., C.E.T.
Engineering Department Manager

Enclosure: Exhibit B – Chennault Sites 2 & 2A – Water Supply

G:\ENGPROJ\LDD\11341_0 B11-Chennault Site 2-2A 185Acres\Utilities\Water\Cover Letter-Water.docx

Parks & Planning

Transportation

Site Development

Utility Systems

Land Surveying

Construction Services

Environmental Services

Real Estate Services

P. O. Box 1751

Baton Rouge, Louisiana

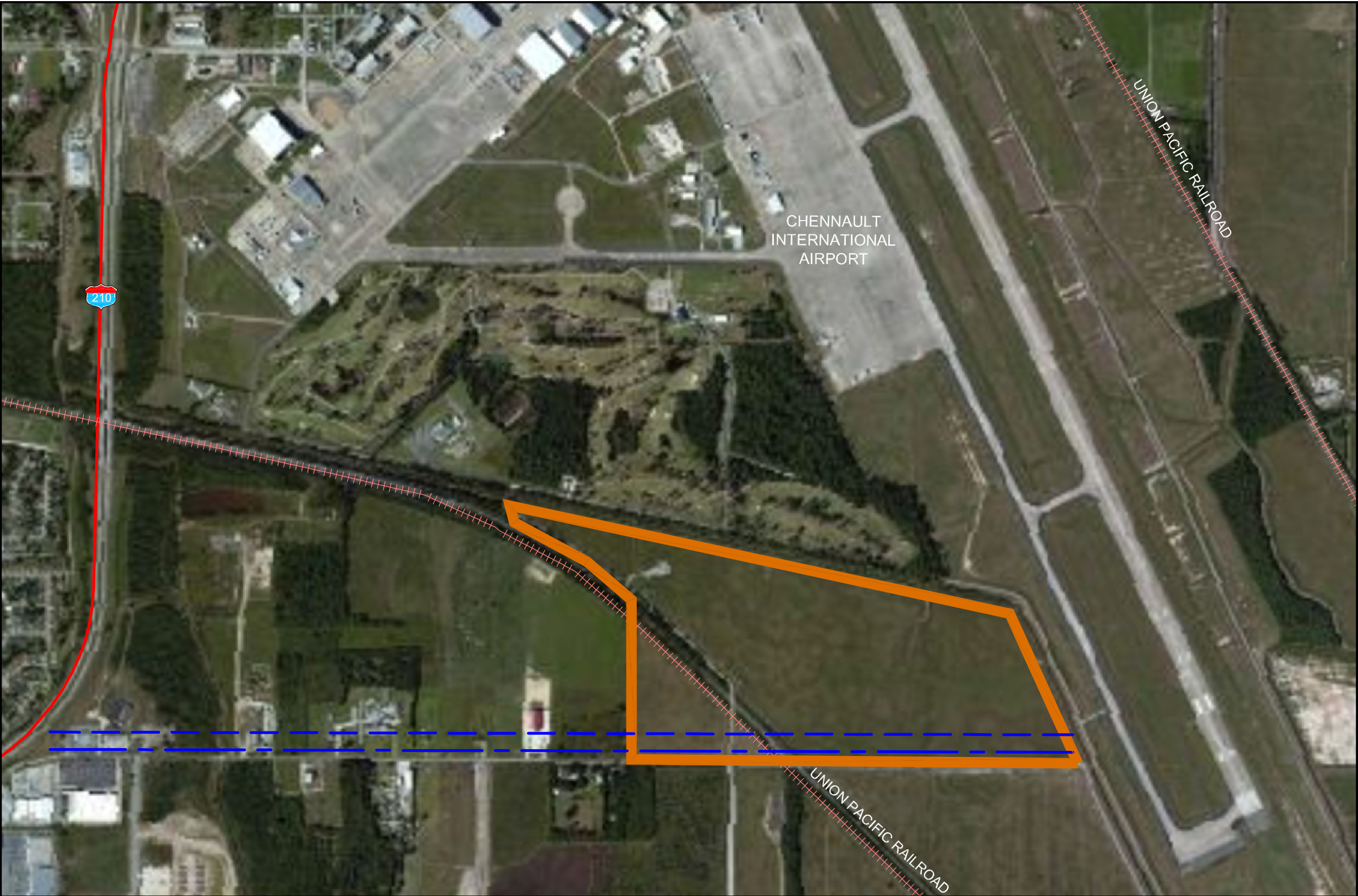
70821-1751

(225) 769-3400

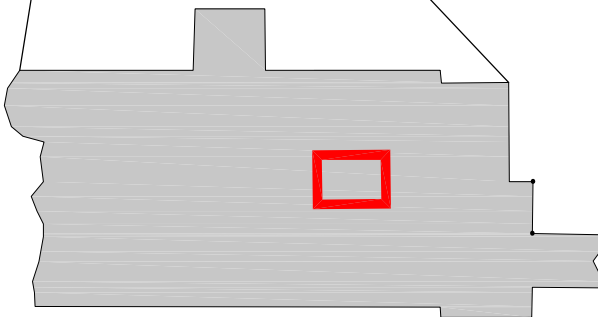
Fax (225) 769-3596

www.sjbgroup.com




Exhibit L1 - Chennault Tract 2-2A - Potable Water Site Map



 Calcasieu Parish



Available Site Data

-  Tract 2-2A
-  Existing City of Lake Charles 12" Water Line; North Side of East Prien Lake Road; Stubs Every 500 Feet
-  Existing City of Lake Charles 12" Water Line; 40' North of East Prien Lake Road; Hydrant Stubs Every 500 Feet

Source:
- Aerial Photo: 2014 Google Earth
- Site Boundaries are Approximate
- 12/10/2014

