



Exhibit C. Bastrop IP Mill Site Property Boundary Aerial Exhibit

Bastrop IP Mill Site Property Boundary Aerial Exhibit

Project:

Bastrop IP
Mill Site
Morehouse Parish, LA

Client:



SCALE: 1"=200'

0 200 400

Revisions:

| # | Date | Description |
|---|------|-------------|
| | | |
| | | |
| | | |
| | | |

Key Plan:

LEGEND

SITE BOUNDARY
(111.30 AC. ±)

Sheet Title:

Property Boundary
Aerial Exhibit

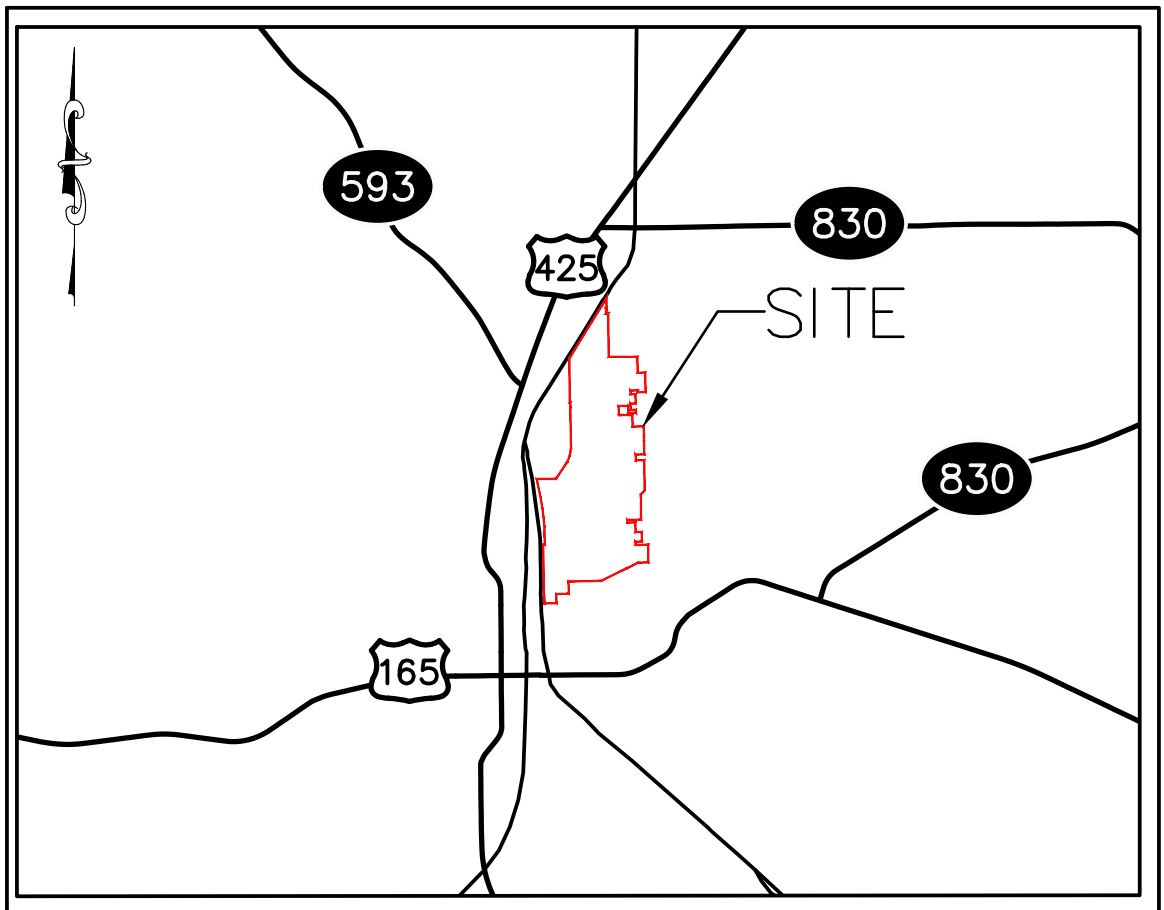
Date: June 2019

Project Number: 216269

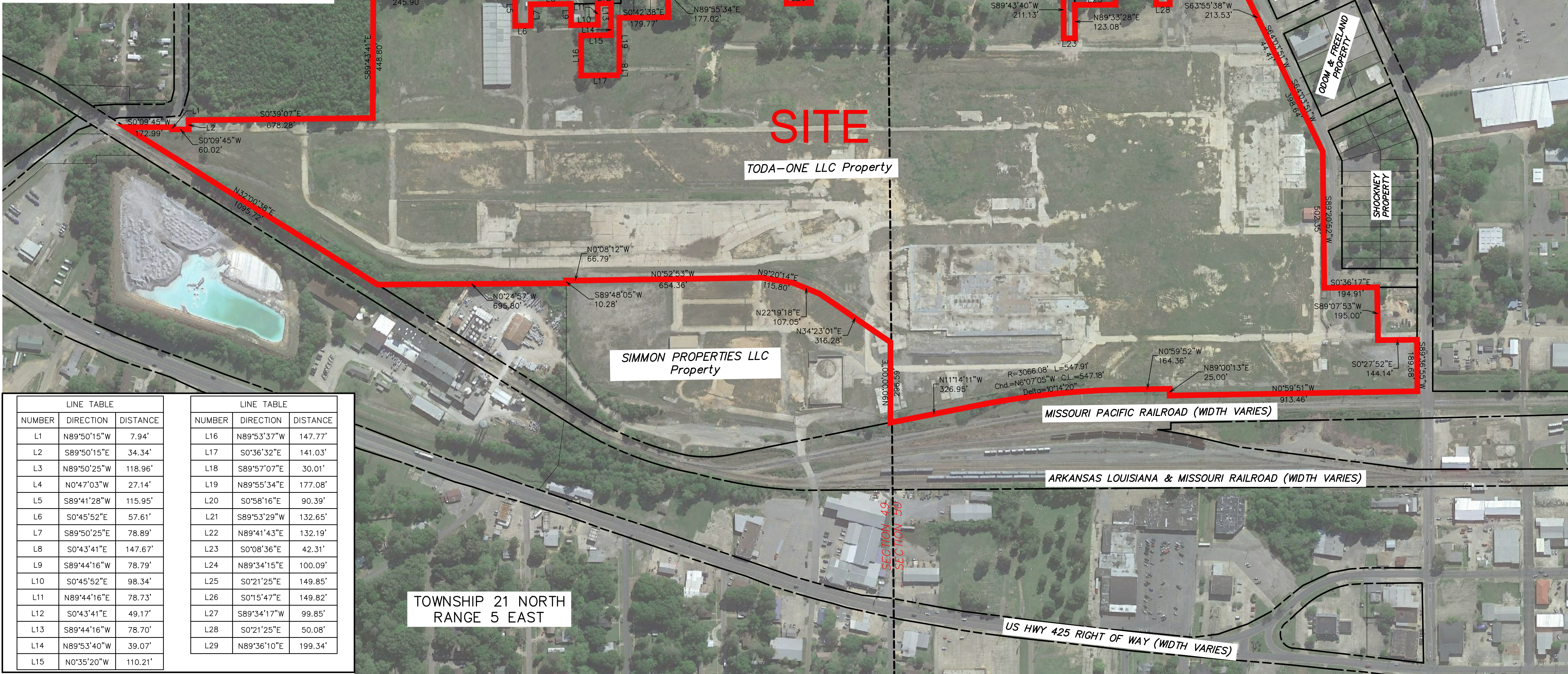
Drawn By: DWC

Checked By: EEB

Sheet:



VICINITY MAP
SCALE: 1"=3000'



| NUMBER | DIRECTION | DISTANCE |
|--------|-------------|----------|
| L1 | N89°50'15"W | 7.94' |
| L2 | S89°50'15"E | 34.34' |
| L3 | N89°50'25"W | 118.96' |
| L4 | N0°47'03"W | 27.14' |
| L5 | S89°41'28"W | 115.95' |
| L6 | S0°45'52"E | 57.61' |
| L7 | S89°50'25"E | 78.89' |
| L8 | S0°43'41"E | 147.67' |
| L9 | S89°44'16"W | 78.79' |
| L10 | S0°45'52"E | 98.34' |
| L11 | N89°44'16"E | 78.73' |
| L12 | S0°43'41"E | 49.17' |
| L13 | S89°44'16"W | 78.70' |
| L14 | N89°53'40"W | 39.07' |
| L15 | N0°35'20"W | 110.21' |

| NUMBER | DIRECTION | DISTANCE |
|--------|-------------|----------|
| L16 | N89°53'37"W | 147.77' |
| L17 | S0°36'32"E | 141.03' |
| L18 | S89°57'07"E | 30.01' |
| L19 | N89°55'34"E | 177.08' |
| L20 | S0°58'16"E | 90.39' |
| L21 | S89°53'29"W | 132.65' |
| L22 | N89°41'43"E | 132.19' |
| L23 | S0°08'36"E | 42.31' |
| L24 | N89°34'15"E | 100.09' |
| L25 | S0°21'25"E | 149.85' |
| L26 | S0°15'47"E | 149.82' |
| L27 | S89°34'17"W | 99.85' |
| L28 | S0°21'25"E | 50.08' |
| L29 | N89°36'10"E | 199.34' |

GENERAL NOTES:

- No attempt has been made by CSRS, Inc. to verify title, actual legal ownership, deed restrictions, servitudes, easements, or other burdens on the property, other than that furnished by the client or his representative.
- Depicted exhibit based on "Act of sale by International Paper Co.to Toda-One LLC" dated October 17, 2018.
- This is not a property boundary survey and is not intended to meet the Louisiana standards of practice for property boundary surveys. Bearings and distances of tracts were obtained from document referenced above.
- The coordinate system used is NAD83 Louisiana State Plane South (US feet). Coordinates were derived by overlaying the boundary on an aerial photograph and are within 100' of true location.
- Rights of Way, Easements, and Servitudes shown hereon have not been verified in the field and any shown are for general locative information only.