

## Exhibit R. Progress Point Site Roadway Transportation Infrastructure Wide Map

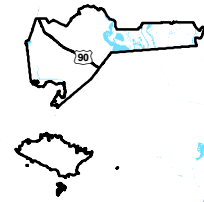




# Progress Point Site Roadway Transportation Infrastructure Wide Map

Progress Point Site  
Iberia Parish, LA

One Acadiana



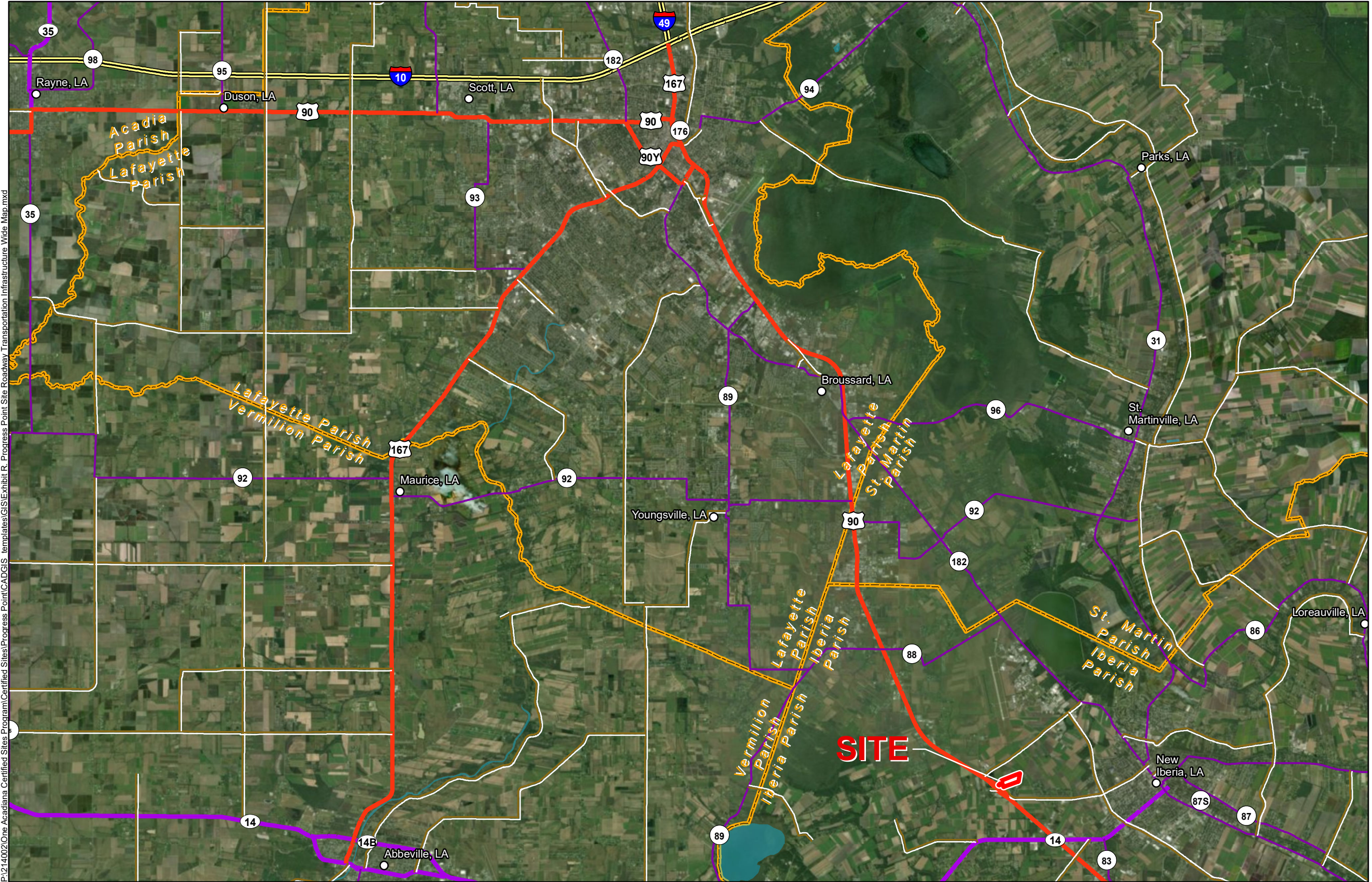
Iberia Parish

LEGEND

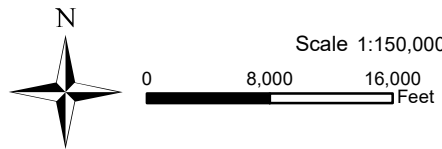
- Site Boundary
- Cities
- Existing Roadway
  - Interstate
  - US Highway
  - 4-Lane State Highway
  - Urban State Highway
  - Rural State Highway
- Waterbody
- Parish Boundary



Date:	3/5/2018
Project Number:	214002
Drawn By:	EEB
Checked By:	TMK



General Notes:  
1. No attempt has been made by CSRS, Inc. to verify site boundary, title, actual legal ownership, deed restrictions, servitudes, easements, or other burdens on the property, other than that furnished by the client or his representative.  
2. Transportation data from 2013 TIGER datasets via U.S. Census Bureau at [ftp2.census.gov/geo/tiger/TIGER2013](http://ftp2.census.gov/geo/tiger/TIGER2013).  
3. 2015 aerial imagery from ESRI Online Basemaps and may not reflect current ground conditions.



P:\214002\One Acadiana Certified Sites\Program\Certified Sites\Progress Point\Map\Map.mxd