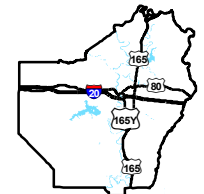


Calhoun Technology Park - South Site Roadway Transportation Infrastructure Wide Map

Calhoun Technology
Park - South Site
Ouchita Parish, LA

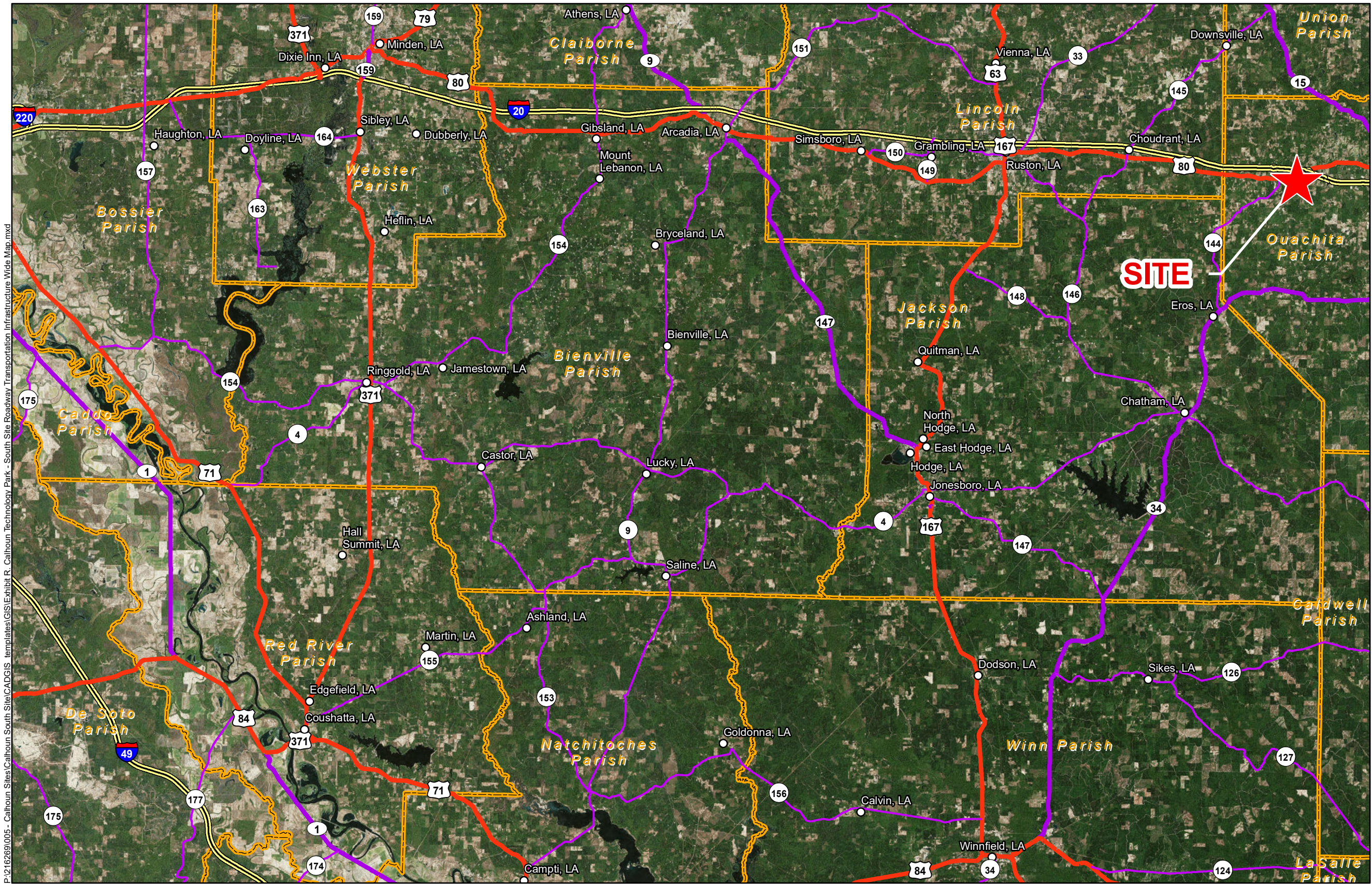
NLEP



Ouachita Parish

LEGEND

- Site Boundary
- Existing Roadway
 - Interstate
 - US Highway
 - 4-Lane State Highway
 - Urban State Highway
- Parish Boundary



P:\216269\005 - Calhoun Sites\Calhoun South Site\CAD\GIS templates\GIS\Exhibit R. Calhoun Technology Park - South Site Roadway Transportation Infrastructure Wide Map.mxd

General Notes:
1. No attempt has been made by CSRS, Inc. to verify site boundary, title, actual legal ownership, deed restrictions, servitudes, easements, or other burdens on the property, other than that furnished by the client or his representative.
2. Transportation data from 2013 TIGER datasets via U.S. Census Bureau at <http://ftp2.census.gov/geo/tiger/TIGER2013>.
3. 2015 aerial imagery from ESRI Online Basemaps and may not reflect current ground conditions.



Scale 1:375,000
0 20,000 40,000 Feet

north louisiana
economic partnership

Date:	3/26/2019
Project Number:	216269
Drawn By:	DWC
Checked By:	TMK

CSRS
IMAGINE SHAPE DELIVER
6767 Perkins Road Suite 200 Baton Rouge, LA 70808
Telephone: 225 769-0546 Fax: 225 767-0060
www.csrsonline.com