

Exhibit O.

Daly Farms Site

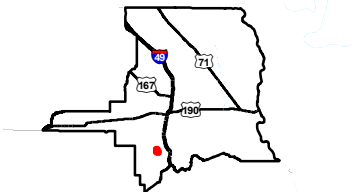
Electrical Transmission Infrastructure Map



Daly Farms Site Electrical Transmission Infrastructure Map

Daly Farms Site
St. Landry Parish, LA

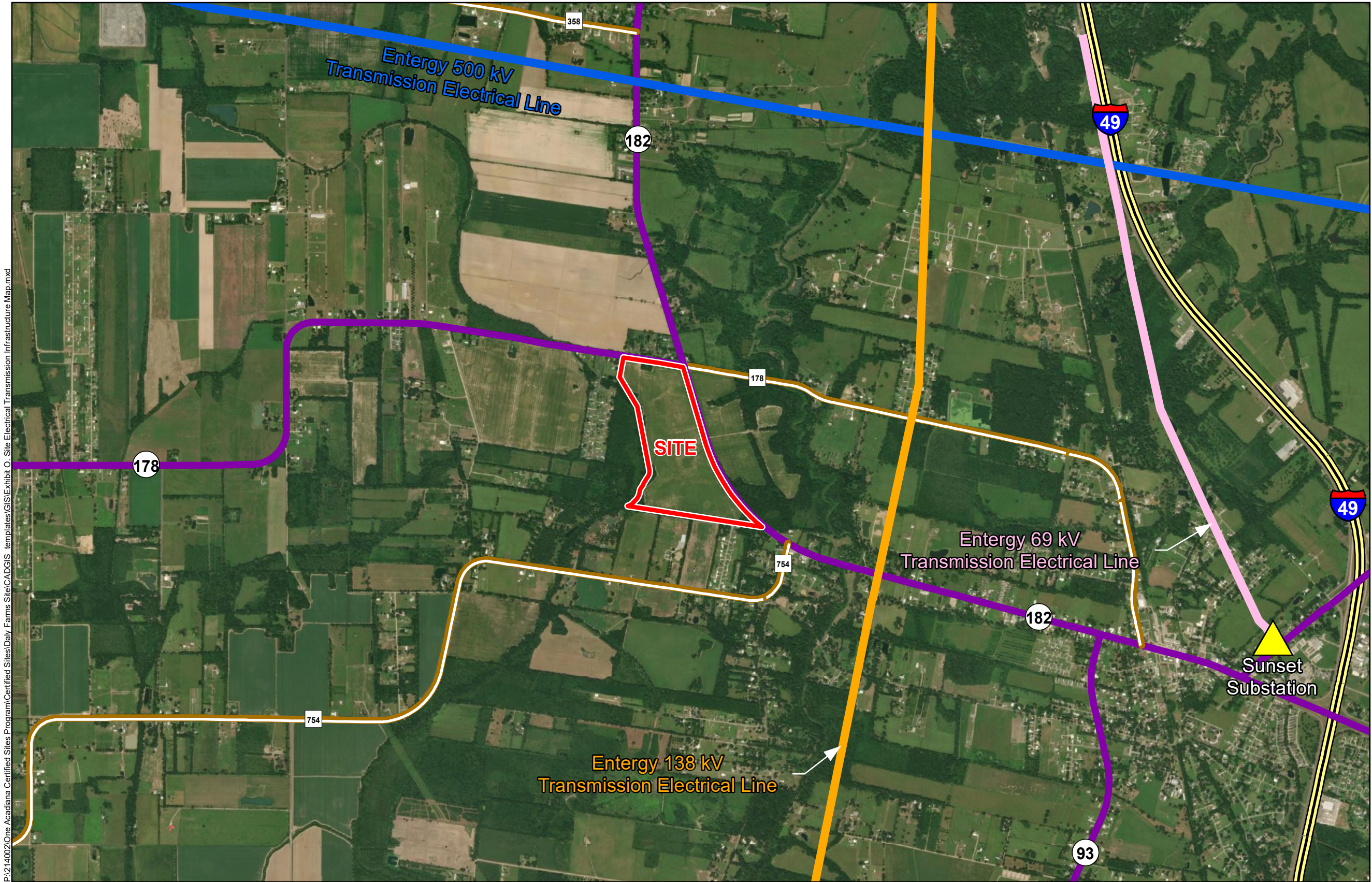
One Acadiana



St. Landry Parish

LEGEND

- Site Boundary (109.97 Ac. ±)
- Electrical 69 kV Transmission Line
- Electrical 138 kV Transmission Line
- Electrical 500 kV Transmission Line
- Substation
- Existing Roadway
 - Interstate
 - Urban State Highway
 - Rural State Highway



General Notes:

1. No attempt has been made by CSRS, Inc. to verify site boundary, title, actual legal ownership, deed restrictions, servitudes, easements, or other burdens on the property, other than that furnished by the client or his representative.
2. Transportation data from 2013 TIGER datasets via U.S. Census Bureau at ftp2.census.gov/geo/tiger/TIGER2013.
3. Utility information from visual inspection and/or the individual utility operators. Exact field location has not been determined by survey. The lines shown are an approximate representation only and may have been offset for depiction purposes.
4. 2015 aerial imagery from USDA-APFO National Agricultural Inventory Project (NAIP) and may not reflect current ground conditions.



Scale 1:25,000
0 1,300 2,600 Feet



Date: 9/18/2020
Project Number: 214002
Drawn By: KPH
Checked By: EEB

