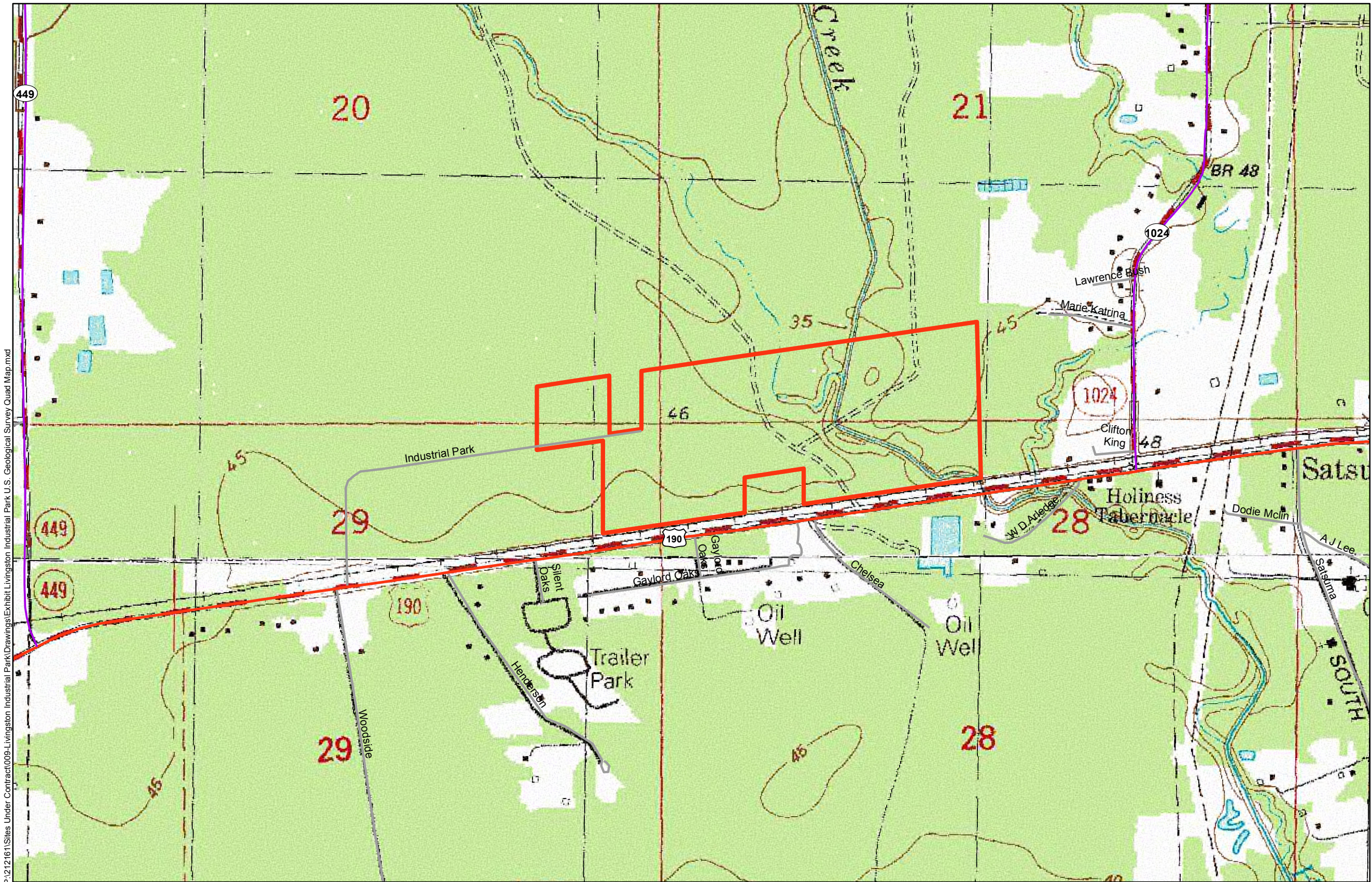


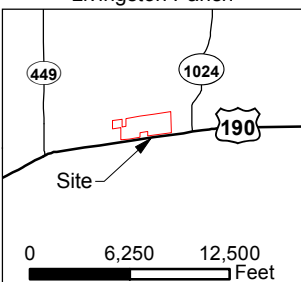
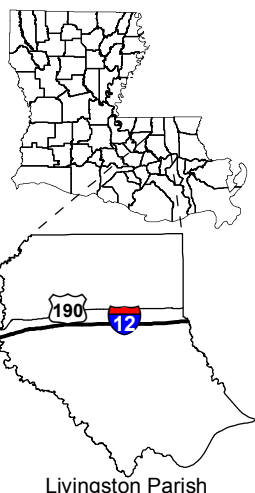
# Exhibit W. Livingston Industrial Park U.S. Geological Survey Quad Map



Project:  
Site Exhibit for  
Livingston Industrial Park  
Livingston Parish, LA

Client:

BRAC



Legend:  
Site Boundary

Baton Rouge Area Chamber.

Source:  
GIS features acquired from public domain  
state and federal data sources (LDOTD,  
GNIS, LOSCO, US Census Bureau).

Date: 11/22/2013  
Project Number: 212161.009  
Drawn By: MMS  
Checked By: TMG

CSRS  
IMAGINE SHAPE DELIVER  
6767 Perkins Road Suite 200 Baton Rouge, LA 70808  
Telephone: 225 769-0546 Fax: 225 767-0060  
www.csrsonline.com

General Notes:  
1. Topo data layer with symbologies created by USDA/NRCS National Geospatial Center of Excellence "USDA-NRCS-NGC Digital Raster Graphic MrSID Mosaic" and downloaded from USDA NRCS site  
<http://datagateway.nrcs.usda.gov/GDGOrder.aspx>  
2. Railroad and Highway data obtained from 2013 TIGER datasets via U.S. Census Bureau at <ftp://ftp2.census.gov/geo/tiger/TIGER2013>.

