

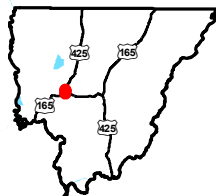
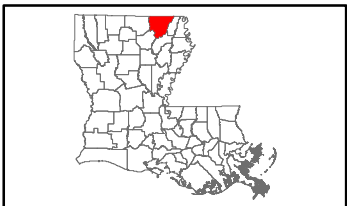


Exhibit CC. Bastrop IP Mill Site All Utilities Infrastructure Site Map

Bastrop IP Mill Site All Utilities Infrastructure Site Map

Bastrop IP Mill Site
Morehouse Parish, LA

NELEA



Morehouse Parish

LEGEND

- Site Boundary
- Existing Veolia North America 10" Wastewater Line
- Existing Entergy Single Phase Electrical Line
- Existing Entergy Two Phase Electrical Line
- Existing Entergy Three Phase Electrical Line
- Existing Atmos Energy Natural Gas Line
- Existing AT&T Telecommunications Line

Existing Morehouse Parish Potable Water Lines

- 10 in. Potable Water Line
- 6 in. Potable Water Line
- 4 in. Potable Water Line

Existing Roadway

- US Highway
- Rural State Highway
- Local Roads
- Railroad
- Stream

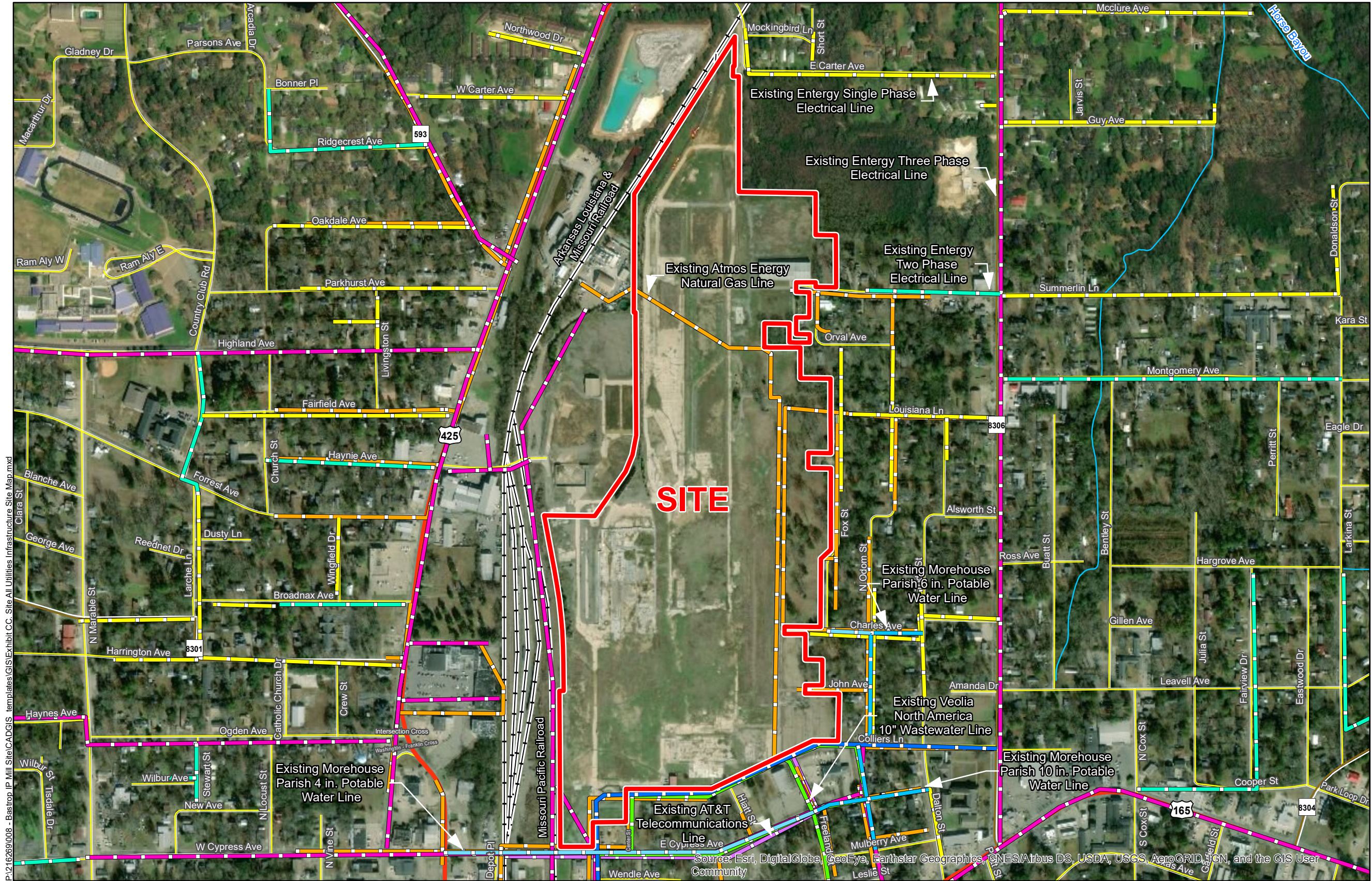


ECONOMIC ALLIANCE

NELEA

Date:	8/12/2019
Project Number:	216269
Drawn By:	BNF
Checked By:	DWC

CSRS



P:\216269\008 - Bastrop IP Mill Site\CAD\GIS templates\GIS\Site All Utilities Infrastructure Site Map.mxd

General Notes:

1. No attempt has been made by CSRS, Inc. to verify site boundary, title, actual legal ownership, deed restrictions, servitudes, easements, or other burdens on the property, other than that furnished by the client or his representative.
2. Transportation data from 2013 TIGER datasets via U.S. Census Bureau at <ftp://ftp2.census.gov/geo/tiger/TIGER2013>.
3. Utility information from visual inspection and/or the individual utility operators. Exact field location has not been determined by survey. The lines shown are an approximate representation only and may have been offset for depiction purposes.
4. 2015 aerial imagery from USDA-APFO National Agricultural Inventory Project (NAIP) and may not reflect current ground conditions.

Source: Esri, DigitalGlobe, GeoEye, Earthstar Geographics, CNES/Airbus DS, USDA, USGS, AeroGRID, IGN, and the GIS User Community



Scale 1:7,000
0 375 750 Feet