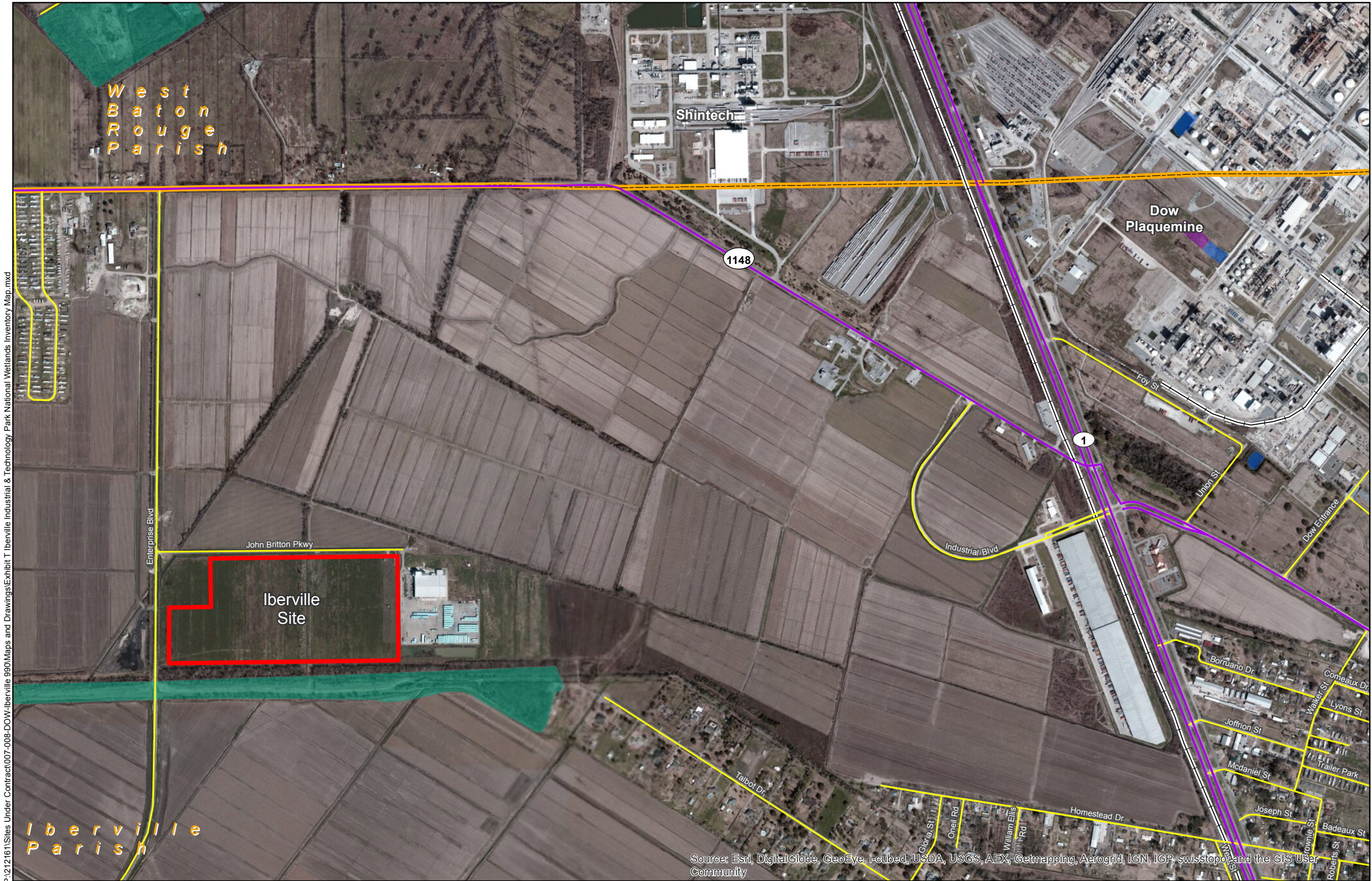
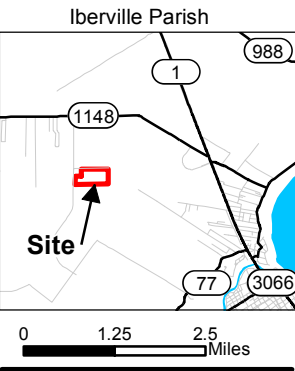


# Exhibit T. Iberville Industrial & Technology Park National Wetlands Inventory Map



Project:  
**Site Exhibit for  
Iberville Site  
Iberville Parish, LA**

Client:  
**BRAC**



- Legend:**
- State Highway
  - Local Road
  - Railroad
  - Freshwater Emergent Wetland
  - Freshwater Forested/Shrub Wetland
  - Freshwater Pond
  - Iberville Site
  - Parish Boundary



Source:  
GIS features acquired from public domain state and federal data sources (LDOTD, GNIS, LOSCO, US Census Bureau).

Date:	11/26/2013
Project Number:	212161.20.008
Drawn By:	MMS
Checked By:	TMG

**CSRS**  
IMAGINE SHAPE DELIVER  
6767 Perkins Road Suite 200 Baton Rouge, LA 70808  
Telephone: 225 769-0546 Fax: 225 767-0060  
www.csrsonline.com

- General Notes:
1. No attempt has been made by CSRS, Inc. to verify title, actual legal ownership, deed restrictions, servitudes, easements, or other burdens on the property, other than that furnished by the client or his representative.
  2. Railroad and Highway data obtained from 2013 TIGER datasets via U.S. Census Bureau at [ftp2.census.gov/geo/tiger/TIGER2013](http://ftp2.census.gov/geo/tiger/TIGER2013)
  3. National Wetlands Inventory data downloaded from [http://www.fws.gov/wetlands/Downloads/State/LA\\_wetlands.zip](http://www.fws.gov/wetlands/Downloads/State/LA_wetlands.zip).

