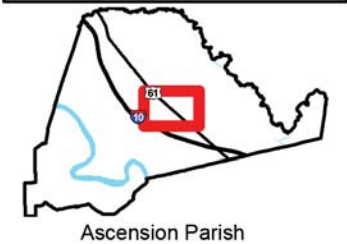
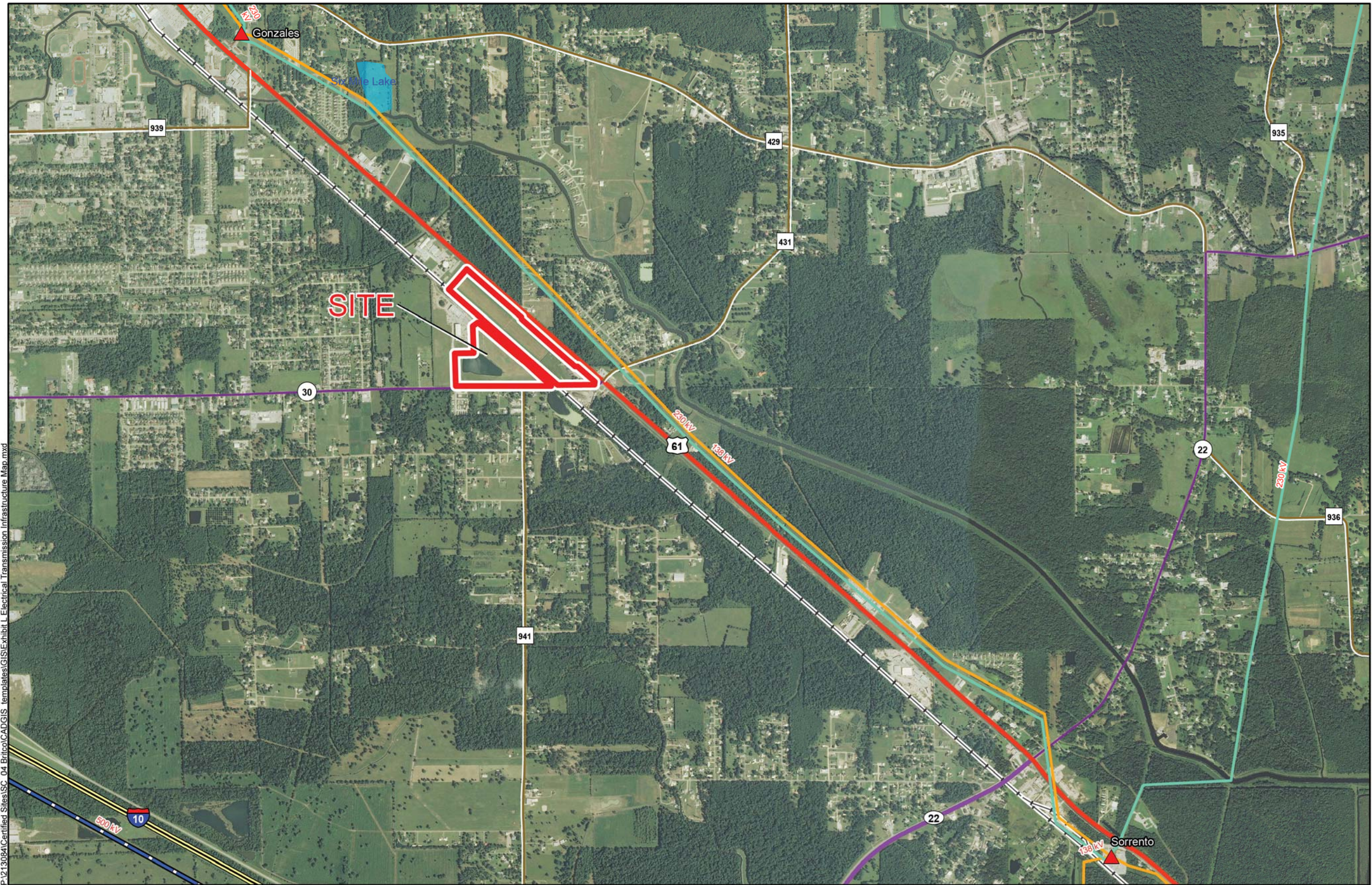


Exhibit L. Britco Site Electrical Transmission Infrastructure Map

Electric Transmission  
Britco Site  
Ascension Parish, LA



LEGEND

- Site Boundary (68.13 Acres +/-)
- Electric Transmission
  - 500 kV
  - 230 kV (Entergy)
  - 138 kV
- Substation
- Existing Roadway
  - Interstate
  - US Highway
  - 4-Lane State Highway
  - Urban State Highway
  - Rural State Highway
- Railroad
- Waterbody



Date: 10/31/2014  
Project Number: 213084.20.002  
Drawn By: MMS  
Checked By: TMG

**CSRS**  
IMAGINE SHAPE DELIVER  
6767 Perkins Road Suite 200 Baton Rouge, LA 70808  
Telephone: 225 769-0546 Fax: 225 767-0060  
www.csronline.com

General Notes:  
1. No attempt has been made by CSRS, Inc. to verify site boundary, title, actual legal ownership, deed restrictions, servitudes, easements, or other burdens on the property, other than that furnished by the client or his representative.  
2. Transportation data from 2013 TIGER datasets via U.S. Census Bureau at <ftp://ftp2.census.gov/geo/tiger/TIGER2013>.  
3. Utility information from visual inspection and/or the individual utility operators. Exact field location has not been determined by survey. The lines shown are an approximate representation only and may have been offset for depiction purposes.  
4. 2013 aerial imagery from USDA-APFO National Agricultural Inventory Project (NAIP) and may not reflect current ground conditions.



Scale 1:24,000  
0 1,250 2,500 Feet