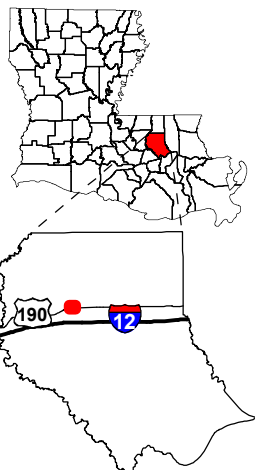


Exhibit Q. Livingston Industrial Park Natural Gas Infrastructure Map

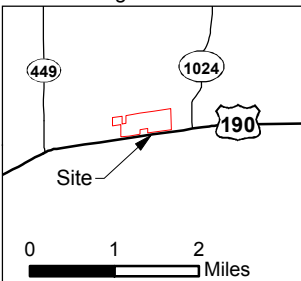
Project:
Livingston Industrial Park
Livingston Parish, LA

Client:

BRAC



Livingston Parish



Legend:

- Site Boundary
- Natural Gas Transmission Line
- Existing 4" Natural Gas Distribution Line
- US Highway
- Local Road
- Railroad
- Waterway

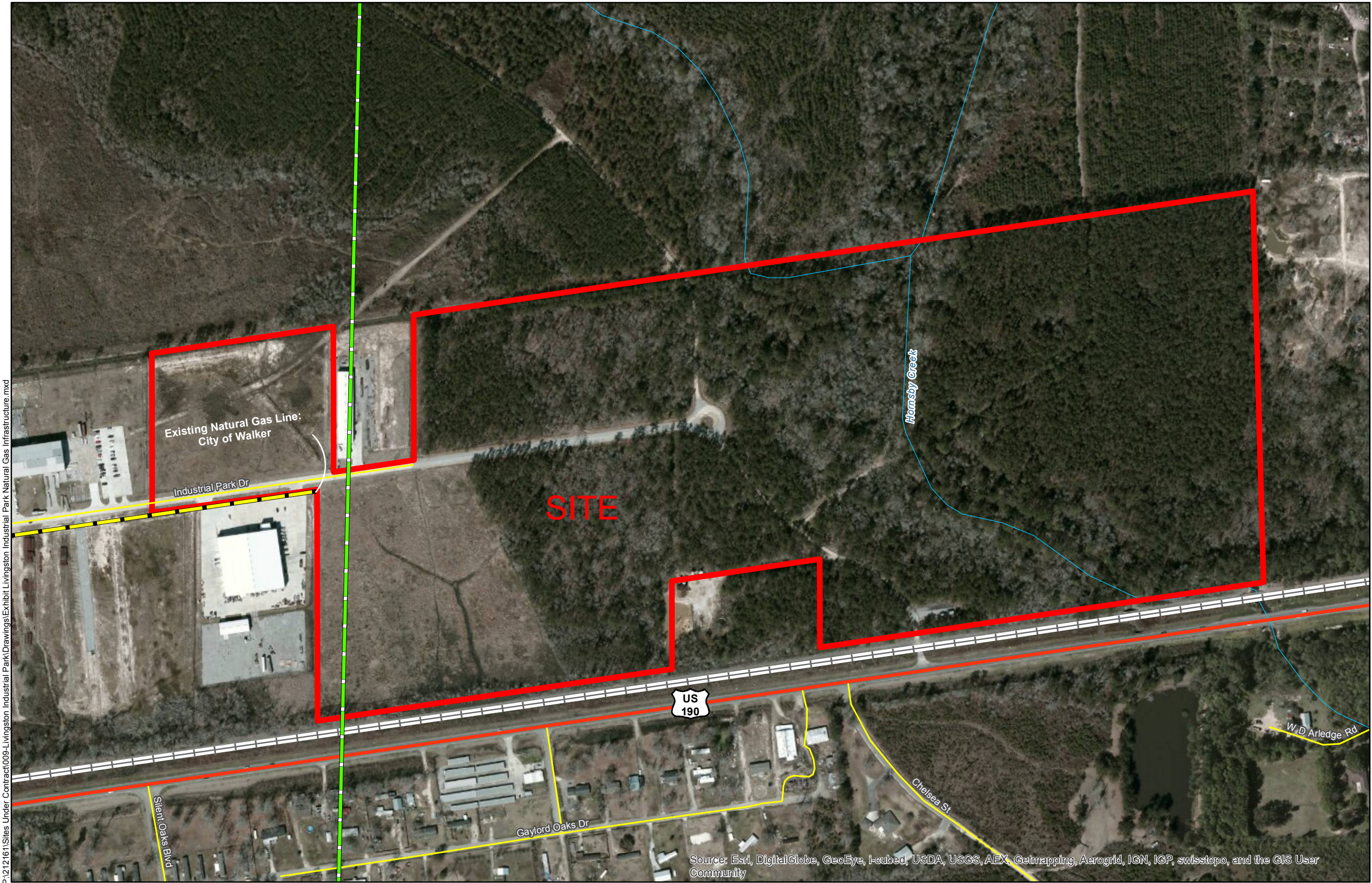


Source:
GIS features acquired from public domain state and federal data sources (LDOTD, GNIS, LOSCO, US Census Bureau).

Date:	12/5/2013
Project Number:	212161.20.009
Drawn By:	MMS
Checked By:	TMG



P:\212161\Sites Under Contract\009-Livingston Industrial Park\Drawings\Exhibit Livingston Industrial Park Natural Gas Infrastructure.mxd



General Notes:

1. No attempt has been made by CSRS, Inc. to verify title, actual legal ownership, deed restrictions, servitudes, easements, or other burdens on the property, other than that furnished by the client or his representative.
2. Railroad data obtained from 2013 TIGER datasets via U.S. Census Bureau at <ftp://ftp2.census.gov/geo/tiger/TIGER2013>.
3. Roads data taken from The Louisiana GIS Digital Map May 2007 Compilation DVD Set, published by Louisiana State University under contract to the Louisiana Oil Spill Coordinator's Office.
4. Pipeline information obtained from the National Pipeline Mapping System website (<http://www.npms.phmsa.dot.gov>), Louisiana One Call and the individual pipeline operators.
5. Exact field location has not been determined by survey. The lines shown are an approximate representation only and may have been offset for depiction purposes.
6. Product types in individual lines can vary the products represented here were current as of the publication of this exhibit, but may change depending on the demands and requirements of their systems.



Scale 1:4,000
0 165 330 Feet